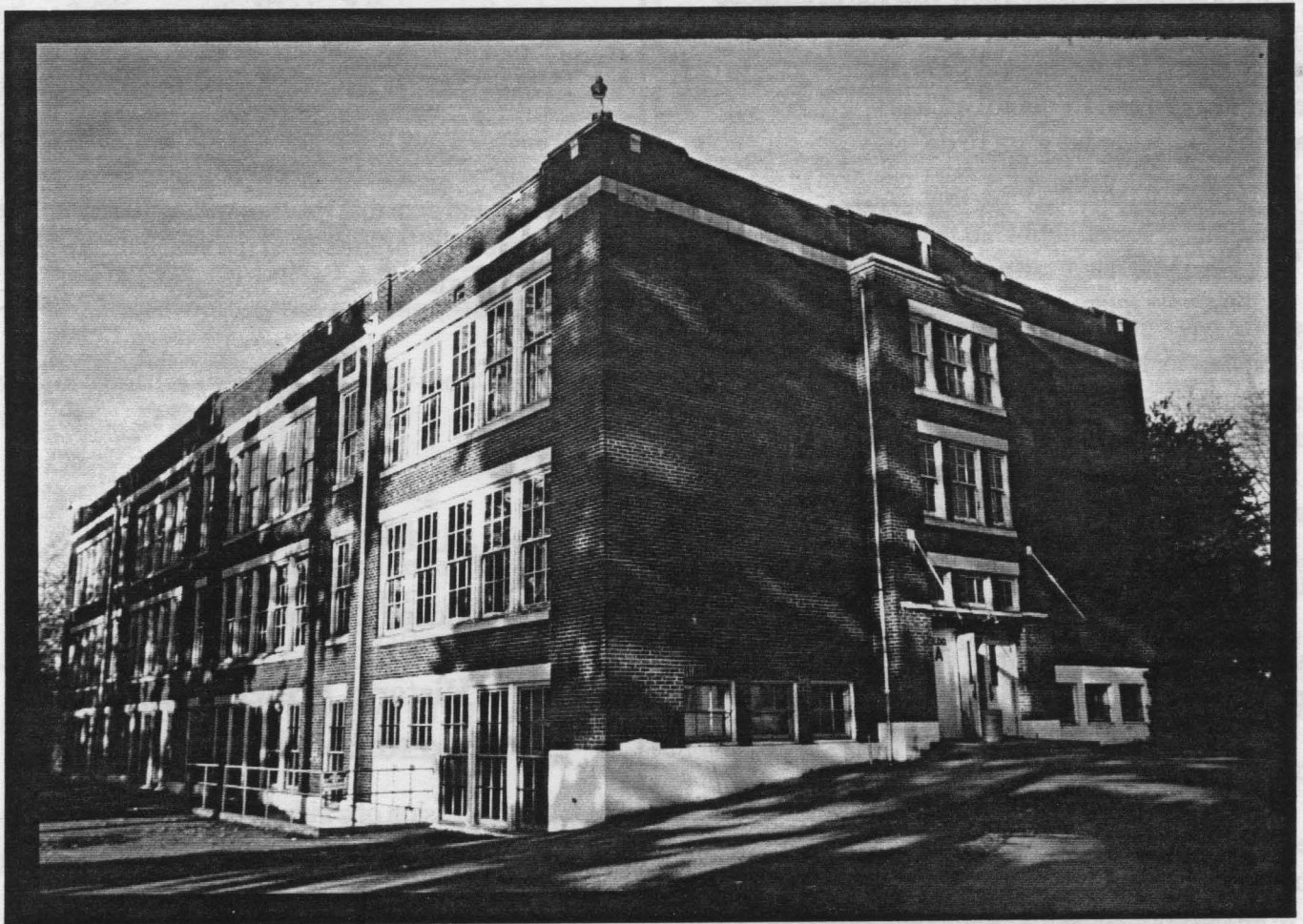


Blackberry Preserves

The Journal of the
Kirkland Heritage Society



Waverly School -- Demolished 1987

A video, *Historic Preservation, Is It Worth It?*,
will be shown and discussed at our next meeting. Come join us.



Kirkland Heritage Society

PRESIDENT'S LETTER

by
BOB BURKE

It is always exciting to start a new year full of all those resolutions of what we will accomplish this year!! Based on everything that happened in 1996, there is a lot to do!! The KHS Board and Committee Chairs have not yet established what it is we want to do this year - however, we will be meeting in February to brainstorm ideas. If you want to participate, please call me! Home - 828-4095; Office - 827-7194.

I recently saw a program on the efforts of three communities which either have effectively managed their growth or overcome their environmental or social problems to achieve a strong sense of community and a high quality of life for their residents. It was interesting because in each example there were three key factors:

1. They took advantage of their location on water;
2. They focused initially on improving the design quality and economic strength of their downtown while emphasizing the pedestrian; and
3. They emphasize their history and the preservation of historic structures and sites.

In each case they also had significant citizen involvement efforts. Although we have made good progress in getting the word out about how important our history and historic preservation are to Kirkland - as I look at our community I have this sense of urgency that we need to intensify our efforts and broaden our audience so we maintain the quality and character of Kirkland for future generations!

**BOARD NOMINATIONS
ELECTION
JANUARY MEETING**

With the resignations of Matt McCauley and Corey Kahler we now have two vacancies on the Kirkland Heritage Society Board. At the last Board meeting it was voted to recommend the following nominations to the membership:

Barbara Loomis, who is now the Secretary, for Communication Officer (1998);

Lynette Friberg to serve as Secretary (1997); and

Christina Brugman as an At-Large Candidate filling the remainder of the Past-President's position (1997).

The bylaws provide that additional nominations can be made from the floor at the election. The person nominated has to indicate that they are willing to serve. The term of office is until June 30 of the year indicated by each of the positions above.



**JANUARY 29th PROGRAM
7:00 p.m.
Kirkland Congregational Church**

**Historic Preservation -
Is It Worth It?**

View and discussion of a video created by Northwest Focus in January, 1995.

Election of Board Members

**BOARD / COMMITTEE CHAIR
MEETING**

**6:00 p.m., January 29, 1997
Kirkland Congregational Church**

All members of KHS are welcome!

FUTURE KHS PROGRAMS

February 26, 1997

Presentation with slides regarding the Klondike Gold Rush and the role the Seattle area played in it as the staging area.

March 26, 1997

Dr. Ernest McKibben will make a presentation on the early days of Kirkland's History.

Meetings are normally held on the last Wednesday of the month at 7:00 p.m. at the Kirkland Congregational Church, 106-5th Avenue. If you need a ride to our meetings, please call George Harris at 822-7141.

ORAL HISTORY MEETINGS

Oral History Workshop

January 25, 1997, 9 a.m.-4 p.m.

Museum of History and Industry (MOHI)

Cost \$10.00

Please Let Christina Brugman know by the 20th if you plan to attend, 821-3605.

Oral History Meeting

February 27, 1997, 7:30 p.m.

At the home of Inge Theisen

12231 - 95th Pl. NE

Kirkland, 823-5710

PROGRAM COMMITTEE

CO-CHAIRS NEEDED!!

During this past year Bob Burke arranged for most of the monthly programs with the help of other Board members and Committee Chairs. He no longer has the time to continue that effort. Last year the Board / Committee workshop we held actually came up with program ideas for almost the entire year, but it requires following through and making the arrangements. We already have people who do publicity and arrange refreshments and programs have already been set up for February and March.

We would like two people who could act as Co-Chairs. In addition to making arrangements for the monthly programs the Co-Chairs attend Board/Committee Chair meetings usually prior to monthly meetings.

If you are willing to work on the Program Committee, please contact Bob Burke: Home - 828-4095 or Office - 827-6550.

MARYMOOR MUSEUM OUTREACH

by

Lynette Friberg

Marymoor Museum is preparing an exhibit entitled "Questions in Eastside History". Karen Luetjen, Director of Marymoor Museum and Lorraine McConaghy, Project Director for the Eastside History Exhibit need your input!

A research committee has started to meet to assist in the formation and production of the upcoming Exhibit, which will run up to one year at the Museum beginning early in 1997. The Exhibit will have a three part emphasis:

- 1) An active Exhibit in the Museum,
- 2) A traveling Exhibit to ensure a dialog process with the Eastside communities and
- 3) A long range interpretive plan for three to five years worth of projects.

If you personally have past Eastside information in the form of memories, diaries, maps, newspapers, magazines, photographs, artifacts or any public records - please share them! If you have items to share or would like to attend the committee meetings or assist with the research of the various Eastside areas and its many categories of interest please call Lynette Friberg at 827-2936.

entertainment Books

This is your last chance to purchase *entertainment Books*. Book close out week is January 27 through February 1. I will bring whatever books I have left with me to our meeting January 29, and turn in the remainder the 30th. If you want to purchase a book before our meeting call me and you can pick it up at my house, (Barbara Loomis, 827-7194).

**DID YOU RECOGNIZE THE BUILDINGS
IN THE LAST ISSUE OF
BLACKBERRY PRESERVES??**

The two buildings shown were:

French House which is listed as a Residential Vernacular style. It was built in 1874 by Harry French, the second family to settle in the Kirkland Houghton area. It was moved in 1977 to its present location at 4130 Lake Washington Blvd.

Clark Nettleton House built in 1914 is located at 400 State Street. It is identified as a Colonial Revival style. It is now the Green Funeral Home. Mr. Nettleton came to Seattle in 1890 and was influential in King County through his business ventures and position with the Post Intelligencer.

**It's Your Memory
It's our History
It's Worth Saving**

Kirkland Trivia

Each month in the 1997 "Town Planner" calender for Kirkland you will find a bit of Kirkland Trivia right above the picture. Thanks to Alan Stein who provided it on behalf of Kirkland Heritage Society.

Virginia V Restoration Update

The restoration of the historic steamer Virginia V is back on track with the first phase starting this month. They hope to have the vessel back in service in the Spring 1997 (Her 75th anniversary year.)

1997 Mosquito fleet Calendars (\$12.25 each) and memberships to The Steamer Virginia V Foundation In are available by contacting them at 624-9119 or writing to P.O. Box 24805, Seattle, WA 98124-0805. Your continued support for Phase II will be greatly appreciated.

UPCOMING EVENTS

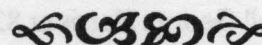


ROYCROFT DESKTOP EXHIBIT

Museum of History and Industry, February 1 through June 2. Focused on the applications of the Arts and Crafts aesthetic to the design of objects used in work and study.

Victorian Festival at Historic Port Townsend

March 21-25. Featuring workshops devoted to the restoration and preservation of historic buildings, plus five days of events portraying Victorian lifestyles. For additional information call toll-free 1-888-ENJOY PT (365-6978).



HISTORIC SEATTLE EVENTS

Preserving Your Old House Lecture Series

Jan 21 & 28, Feb 4, 7-9 PM
Good Shepherd Center

Winter Tea & Tour

Sunday, Jan. 26, 2-4 PM
at an historic Capitol Hill house

ARTS & CRAFTS GUILD LECTURE SERIES:

The Arts & Crafts Movement and
the Roycroft Connection
Feb. 3, 10, 18, & 25
Arts & Crafts Demonstrations
Mar. 1 & 29; April 26
Museum of History & Industry

Historic Seattle's Annual Spring Lecture Series:

Community Building Through Preservation
April 28, May 5 & 12, 7-9 PM
Tour: May 10
Museum of History & Industry

Historic Seattle's Summer Event

Steilacoom, WA, June 7



ARTICLES OF THE EAST SIDE JOURNAL

by
Alan Stein

This article is from the 5/29/30 edition of the East Side Journal. The Service Club had sponsored an essay contest on the topic "Why Live in Kirkland?" The prize was twenty dollars (a kingly sum during the Depression) and was won by Beatrice Kittrell, a teacher at the Kirkland High School.

It is interesting to note that most of the 10 reasons she listed are still true today, although it's a lot harder to raise a family these days, with the preponderance of condos and apartments popping up all over town.

WHY LIVE IN KIRKLAND? HERE ARE TEN REASONS THAT WON THE FIRST PRIZE

Following is the paper presented by Miss Beatrice Kittrell in the recent Contest sponsored by the Service Club and she won the first cash prize of twenty dollars:

WHY KIRKLAND IS A GOOD PLACE TO LIVE IN."

1. Kirkland is Ideally located.

The visitor to Kirkland is immediately charmed with the first glimpse of this little city. Beyond the graceful sweep of the lake shore the business section lies, with the green hills in the background dotted with homes of various types, while in the East rise the snow capped Cascades, to the South, Mt. Rainier and to the North, Mt. Baker. Splendid paved and graveled roads make it easy for the motorist to reach many recreational and scenic spots that abound so close to Kirkland.

2. Kirkland Has Many Possibilities for Healthful Recreation.

Sailing, canoeing, fishing, bathing, motoring, tennis, and golf are a few of the delightful sports afforded the residents of Kirkland. Mt. Rainier, National Park, one of the most beautiful spots accessible to man, is but a few hours distance from Kirkland, while Puget Sound, the Hood's Canal, Country and the Olympics are even closer.

3. Kirkland has Ideal Climate.

The climate in Kirkland is equable, being free from extremes of temperature and high winds. Electric storms are rare. Crop failures are unknown and building operations are carried on the year around.

4. Lands Adjacent to Kirkland Ideal for Gardening and Chicken Raising.

For those who like the advantages of a large city, without living in it and who enjoy a garden spot without the drawbacks of rural life, Kirkland provides an ideal location. Level fertile land and the slopes of low hills may be developed into garden tracts from one half to five acres in size. Many of these have city water, electric lights and telephone service. Garden and dairy products find a ready market in the needs of a growing community. Poultry raisers are setting records in egg production. Homes may be built and families maintained in comfort on from five acres upward. Chickens, vegetables, berries and fruit make this possible while the moderate prices of land aid those of moderate means to get a start. Both climate and soil are adapted to the growing of bulbs and rapid strides are now being made in the development of the bulb industry.

5. Kirkland Has Varied Industries.

For the wage earner, Kirkland has a large woolen mill, where the finest quality of blankets and woollens are manufactured, cannery for the canning and preserving of local fruits and berries, a lumber yard and a ship yard on fresh water where ocean going vessels may put in for repairs.

6. Kirkland Has Many Business Advantages.

For those living on adjacent farms as well as in the city proper, Kirkland has electric lights, telephone, city water piped from a crystal spring, department, drug, hardware, music, and feed stores, fuel and ice companies, garages, laundry, bakeries, restaurants, modern banking facilities, one of the finest suburban newspaper plants in the northwest and a beautiful new and completely equipped hospital.

7. Kirkland Has Many Cultural Advantages.

For the culture of its people, Kirkland offers exceptional grade and high schools, churches of various denominations, a modern and artistic motion picture theatre, a good library and various lodges, service clubs, women's clubs, etc.

8. Kirkland is Adjacent to Seattle.

Adjacent to Seattle, the Metropolis of the Northwest, and connected therewith by paved highways and exceptional ferry service, Kirkland offers all the advantages of modern rural life accessible to the culture, business and pleasure of a great city.

9. Kirkland Offers Lower Taxes.

Because of the lower taxes and assessments of a small town, it is possible for the man of moderate means to own and maintain a higher type of home than would be possible in a larger city.

10. Kirkland is an Ideal Place to Raise a Family.

A place to live and bring up a family, a place to make an honest living, within sight of nature's grandest scenery - what more could one ask for?

Beatrice Kittrell, Instructor in Kirkland High School



**DOWN TOWN KIRKLAND
DOES ANYONE KNOW WHERE AND WHEN?**

Blackberry Preserves is produced by the **Kirkland Heritage Society**, 304 - 8th Ave. West, Kirkland, WA 98033, for KHS members and those interested in Kirkland's past. To contribute articles or for more information on KHS, please call Bob Burke, Interim Editor, 827-6550 or 828-4095 or E-Mail - [mcbinc @ halcyon.com](mailto:mcbinc@halcyon.com)



Kirkland Heritage Society
304 - 8th Ave. West
Kirkland, WA 98033

Kirkland Heritage Society