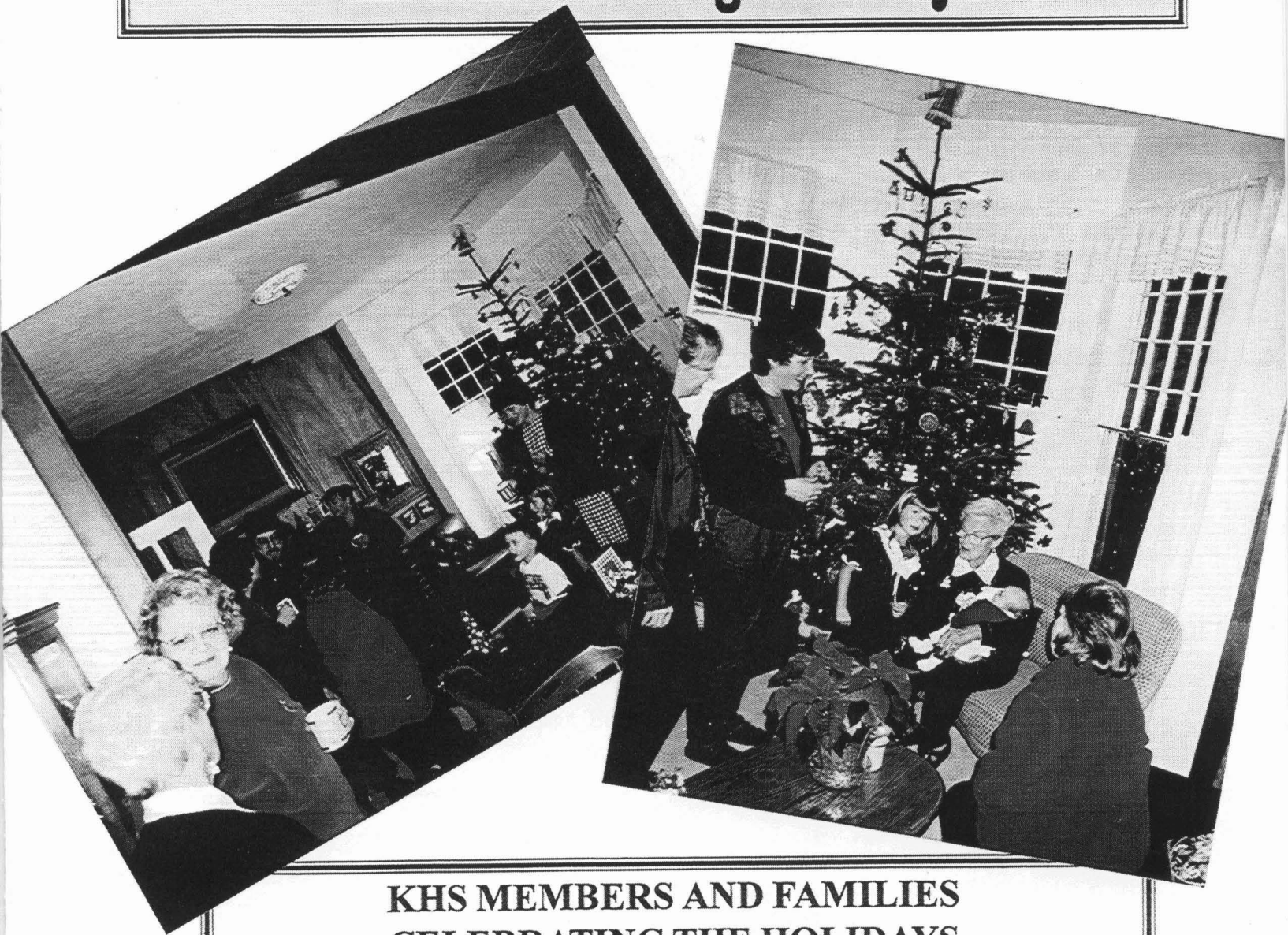


Blackberry Preserves

The Journal of the
Kirkland Heritage Society



KHS MEMBERS AND FAMILIES
CELEBRATING THE HOLIDAYS
AT THE HISTORIC HARRIS HOME



Kirkland Heritage Society

JANUARY 2000 PRESIDENT'S LETTER

by
Bob Burke

It is always good to reflect on what an organization has been doing and what it has accomplished during a year - particularly significant when facing the turn of the century - somehow it seems more momentous and obviously - historic!

I was struck as we entered this New Year, Centennial and Millennium that many of the stories leading up to it (old front pages of Bellevue American in Eastside Journal organized by **Chuck Morgan**) and most of the celebrations on New Years Eve around the world highlighted each country's history and heritage. To me, it reinforced how important it is to retain that aspect of our community although Kirkland is "young" compared to most of the cultures we experienced. **Barbara Loomis** tells a story about a noted historic preservationist from France who visited a King County Landmarks Commission meeting a few years back and was extremely impressed that a log cabin of a homestead on Vashon Island was being saved - because they had so few examples of this type of structure to show that part of their history.

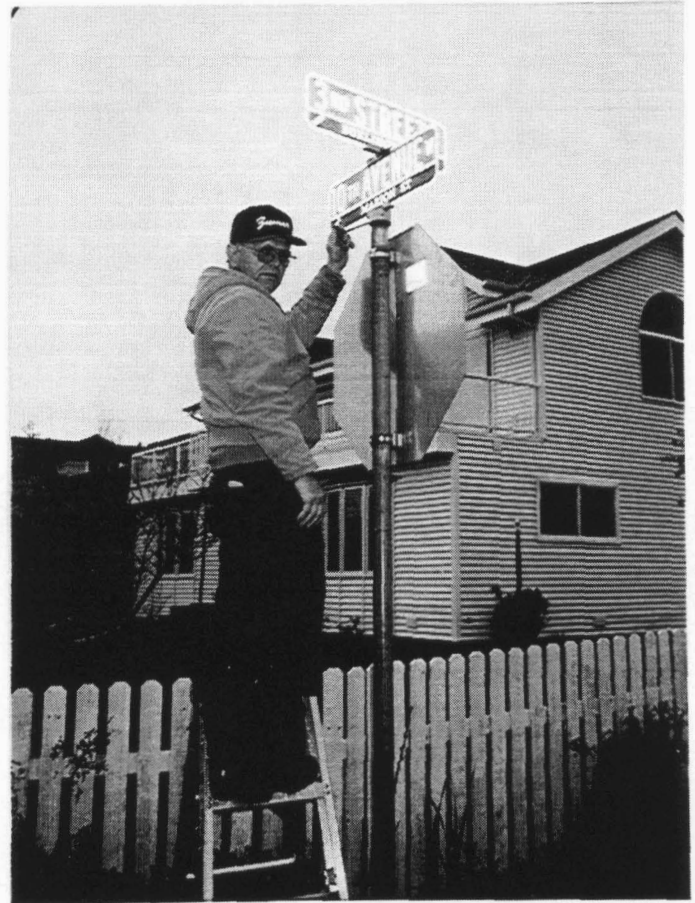
In preparing for our Annual Board Retreat it became apparent that the challenge to the Kirkland Heritage Society in 2000 will be to successfully complete the projects that were started in 1999 and to continue to be actively involved in efforts such as Downtown Kirkland and the Eastside Heritage Roundtable.

Finally, **Thank You!** to every member of KHS who made it possible for us to do all that we did in 1999.

And, a very special **Thank You!** to the **Kirkland City Council** who made the difficult decision to save the Christian Science Church and to all the **Staff** who have helped implement that decision!!

200 STREET SIGNS INSTALLED

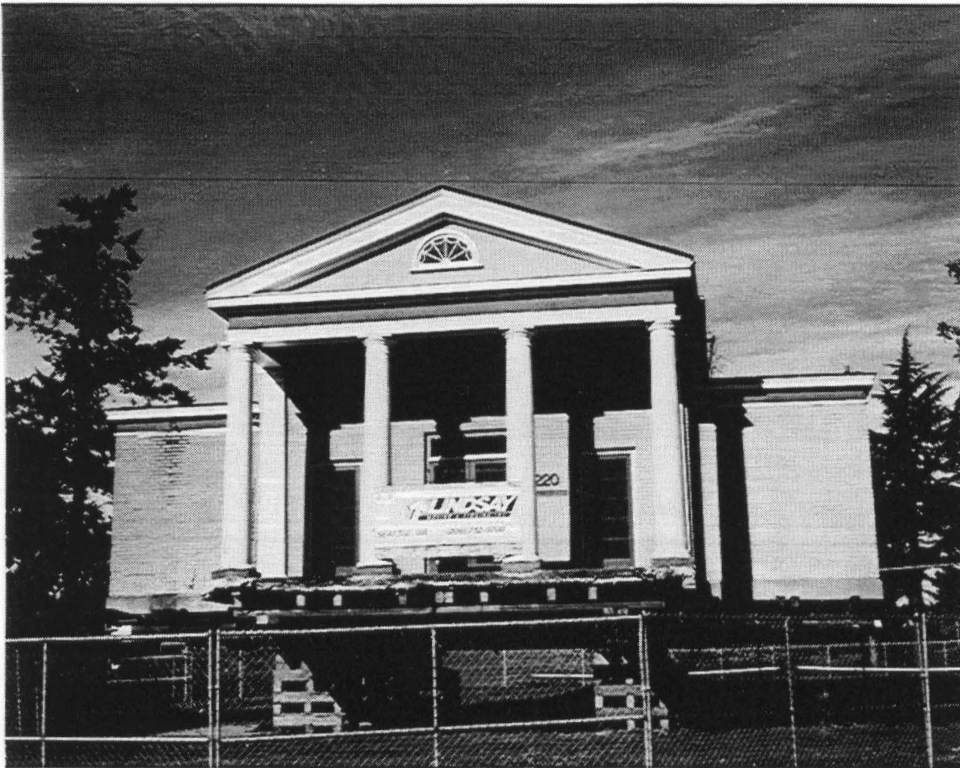
One hundred intersections with the historic name on the street sign have been installed in the Market, Norkirk, Highlands and North Rose Hill neighborhoods. Our thanks to the Kirkland City Council for the inclusion of funds in the 1999 budget and to all the people in Public Works who helped in the design and installation: **Jim Arndt**, Public Works Director; **John "Hoppy" Hopfauf**, Street Department Manager; **Bill Canniff** and **Al Kostelecky**, Sign Shop Craftspersons.



Al Kostelecky Installing Historic Street Sign

NANCY STEPHENS NEW KHS TREASURER

Nancy Stephens has agreed to assume the position as Treasurer for KHS. Nancy is our liaison to the North Rose Hill Neighborhood Association and has been the Chair of the Oral History Committee. Congratulations and thank you Nancy.



**CITY COUNCIL APPOINTS
CATHY SMITH
KIRKLAND REPRESENTATIVE
TO LANDMARKS
COMMISSION**

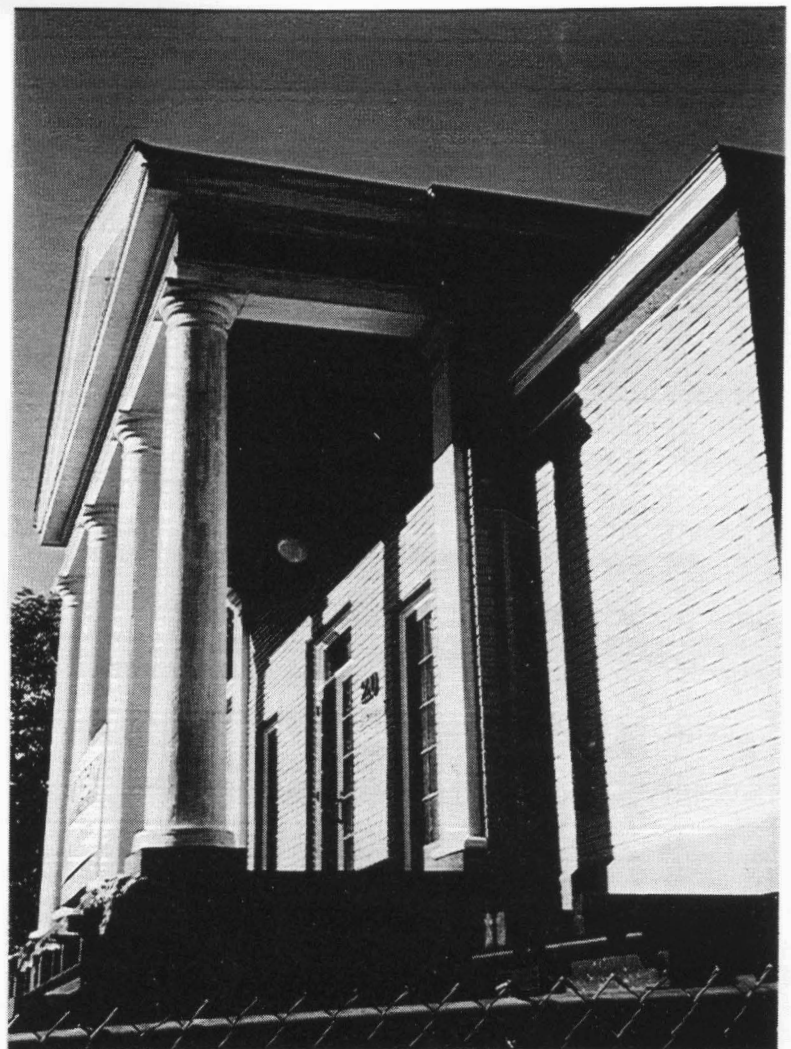
The City Council asked KHS to suggest names for their consideration in appointing Kirkland's first representative to serve with the King County Heritage and Landmarks Commission when considering buildings from Kirkland which have been nominated. **Cathy J. Smith** was appointed as the representative with **Pamela J. Owens** as the alternative. The first Kirkland building to be considered will be the Christian Science Church in February.

**CHRISTIAN SCIENCE CHURCH
FOUNDATION BID APPROVED
WORK TO START IN JANUARY 2000**

The plans for the foundation of the building were put out for bid in November. City Council took action and awarded the foundation work to the successful bid at their December 14th meeting. Construction is scheduled to begin in January and be complete in March. This will place the building on a foundation and get utilities roughed into the building. Thanks to **David Ramsay**, City Manager, **Barry Russell**, **Marc Connelly**, **Mark Johnston** of the Parks Department, **Eric Shields** and **Dawn Nelson**, Planning, **Ken Carlson**, Building, and **Harry Cummings**, Architect, for all your work on the Church!

KHS will be submitting grant requests in early 2000 as well as starting efforts for in-kind contributions so we'll be ready to get volunteers to work this spring.

GET YOUR PAINT BRUSHES READY!



**HISTORIC PROPERTY
INVENTORY REPORT
PRINTED**

After a final review by members of the Steering Committee, the final report on the property inventory prepared by **Mimi Sheridan** has been printed. Copies are being provided to the City Council, Houghton Community Council, Planning Commission, Design Commission, Kirkland library as well as City, King County and State staff involved in historic preservation. Also, a copy of the inventory form has been provided to each property owner. The Planning Commission will be working on incentives and regulations for historic preservation in 2000 after which they will consider how to handle official recognition of properties by the City.

NORKIRK NEIGHBORHOOD HISTORY

In cooperation with the Norkirk Neighborhood Association - KHS has prepared an insert on Norkirk History which will be sent with their newsletter to every resident in the neighborhood. The new Norkirk logo, prepared by **Camille Spina**, has a sketch of a bungalow which is very appropriate to the era and style of many of the historic buildings. Thanks to **Julie Bebee** for coordinating this with us. It is a great opportunity to have nearly 2,400 households learn about Kirkland's rich history. We will be exploring opportunities with other neighborhoods.

We are looking for volunteers to help prepare neighborhood histories as part of our Phase Two grant from the City. These histories will not only provide them with a better understanding of their history, but also will provide a context for historic buildings and sites and neighborhood plan updates which will be done by the City over the next four or five years.

**ANNUAL BOARD RETREAT
January 15, 2000**

This year the KHS Board will be holding its annual retreat on January 15, 2000 at Melissa Thirloway's house. Normally we include committee chairs and others who are working on various projects, but this year there is so much going on, that we decided to start with a small Board meeting to establish some priorities and then have another session - probably in February where we would invite all Committee members and volunteers to organize their activities. This will likely include new committees for fund raising and volunteers for the Christian Science Church.

**ALAN STEIN ELECTED PRESIDENT
OF AKCHO**

On December 6, 1999, members of the Association of King County Historical Organizations (AKCHO) elected KHS's Vice President **Alan Stein** as AKCHO President for the upcoming year. AKCHO is the umbrella group for all historical organizations in King County. The association works to encourage cooperation among historical organizations and foster the study and preservation of the history and heritage of King County. AKCHO has been helping the heritage community for over 20 years, and currently boasts over 200 members.

Alan and other new officers will be installed at AKCHO's annual luncheon banquet on January 25, 2000 at the Mount Zion Baptist Church in Seattle. Guest speaker at the Banquet will be King County Council member and historic preservation advocate Greg Nickels. Recently, Nickels and other King County Council members were instrumental in establishing sustained funding for local heritage groups for the first time. King County Landmarks & Heritage Commission is currently working on guidelines to distribute these funds.

Alan takes the helm of AKCHO at an exciting time. With the upcoming sesquicentennial of King County in 2001, much work is needed in preparation of this momentous anniversary. Alan says that he is looking forward to working with all local historical organizations: "Having worked with the Kirkland Heritage Society and with HistoryLink has given me wonderful insights into community heritage on many levels. I hope that I can bring much of what I have learned to the table so that we all can benefit."

CONGRATULATIONS! ALAN!



1999 - WHAT A YEAR!!

Christian Science Church saved, relocated and contract signed to put it on a foundation. by mid-March 2000!! This was noted as "one of 1999's good ideas" in a Seattle Times editorial.

A **Friend of Kirkland Award** was presented to **Bob Burke**, KHS President and **Barbara Loomis**, KHS Communications Officer and Publisher of **Blackberry Preserves**, by the Kirkland Chamber of Commerce.

Mickelson Marker - received King County Grant with installation due in January or February. Four more are in the works!

Archives Grant received for equipment and temporary archives is installed and ready for use.

Education Program Grant in conjunction with **Kirkland Arts Center** produced video and handouts on history of Kirkland for use by Elementary Schools.

Historic Property Inventory Report completed, printed and distributed. Work continuing on incentives and regulations as well as Phase Two of our City grant.

Street Signs with Historic Names installed by City on 100 intersections. Another 100 will be done in 2000.

Interlocal Agreement for Historic Preservation Services signed with King County. **Cathy Smith** is Kirkland's representative; **Pam Owens** is alternate.

Alan Stein, KHS Vice President, elected president of Association of King County Historical Organizations (AKCHO).

KHS Membership Exceeds 100 with **Baskins** becoming our second life members. Thanks to **Melissa Thirloway**, Membership Chair and everyone for their continuing, generous support!

Bob Burke serves as member of the Downtown on the Lake Board representing KHS and is also a member of the Downtown Strategic Plan taskforce.

Barbara Loomis was appointed by the City Council to the City of Kirkland's first **Design Review Board**.

Eastside Heritage Roundtable organized to work on developing an Eastside Heritage Center. KHS participated in the Eastside Heritage Exhibit at Bellevue Square in July.

King County provides first sustained funding to support heritage organizations in the County.

Supported **Corrine Hieb's** effort for the **Kirkland Womens Club** to build the beautiful new fountain in Kirkland's historic cemetery.

Plus, all our regular programs such as **Blackberry Preserves** put together by **Barbara Loomis**, a wonderful variety of programs arranged by **Shannon Harris**, our booth at Summerfest and Taste coordinated by **Vic Newhard**

Eastside Heritage Roundtable Update

By Alan J. Stein

The Eastside Heritage Roundtable, a consortium of heritage organizations, was formed over a year ago as a way of building a strong heritage presence here on the Eastside. The Roundtable has been an excellent way for each of the communities to share resources and info in a quick and timely manner, and to work together for our common goals.

Much was accomplished in 1999. As members, The Kirkland Heritage Society, along with every other major Eastside heritage organization, helped with the following:

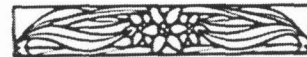
- Participated in a heritage display at Bellevue Square Mall during the months of May and June.
- Worked with Mimi Sheridan in creating a survey of the needs and assessments of Eastside Heritage groups.
- Began discussions towards the creation of an Eastside Heritage Center, to service the needs of all local groups and to showcase the fine work we have all been doing.
- Met with many representatives from the local media to solidify ourselves as strong resources for reporters.
- Sold Eastside history books and items at the Museum of History and Industry's Holiday Book Fair.
- Met with the East King County Convention and Visitor's Bureau to assist in their upcoming publication of an Eastside Heritage Sites Brochure.

Much more is planned in the coming year. The focus in 2000 and beyond will be the Heritage Center, which Seattle Times editor James Vesely picked as one of the Good Ideas on the Eastside for 1999 (along with the saving of the Christian Science Church here in Kirkland). The Roundtable will be working on many more group projects also.

For more information on the Roundtable, and how you can help, contact Alan Stein.

MEMBERSHIP

THANK YOU, THANK YOU!
SHARON & LLOYD POWELL
FOR YOUR \$500 DONATION



THANK YOU FOR YOUR
SUPPORTING MEMBERSHIP

DICK BEAZELL



WELCOME NEW MEMBERS

David Cantrill
Deborah Olsen
Lana Stephens
Roger & Jette Townsend
Robert & Vivian Weber

THANK YOU MEMBERS
FOR YOUR RENEWALS

Rick & Lisa Altig
Chet & Susie Creger
Bob & Carolyn Norman
Betsy Pringle
Pat Stupfel
Donovan Tracy
Fred & Courtney Romano

**K I R K L A N D
HERITAGE SOCIETY**

DIRECTORY

OFFICIAL ADDRESS:
304 - 8th Avenue West
Kirkland, WA 98033
Phone: (425) 827-7194

OFFICERS AND BOARD

President: Bob Burke
827-6550 (o) 828-4095(h)
Vice President: Alan Stein
821-0164
Secretary: Loita Hawkinson
827-1950
Treasurer: Nancy Stephens
822-9475
Communications:
Barbara Loomis 827-7194
At Large Member:
Melissa Thirloway 889-9120
At Large Member:
Vic Newhard 820-5151 ext.233

COMMITTEE CHAIRS

Archives
Sue Carter 822-5486
Don Winters 827-2650
Oral History
Nancy Stephens 822-9475
**Historic Buildings
and Planning**
Vic Newhard 820-5151 ext.233
Velda Wilson 641-0528
Membership and Funding
Melissa Thirloway 889-9120
Programs
Shannon Harris 822-2478

SPECIAL ACTIVITIES

Exhibits:
Vic Newhard 820-5151 ext.233
Web Site:
Stephanie Loomis 827-7194

CALENDAR



**HAPPY
NEW
YEAR**

**CELEBRATE
OUR
HERITAGE
IN
2000**

January 15
**KHS ANNUAL
BOARD RETREAT**
9:00 a.m. - 2:00 p.m.
Melissa Thirloway's house

January 25
AKCHO
9:a.m.
ANNUAL MEETING
Mt Zion Bapstist Church, Se-
attle, Installation of Officers,
Alan Stein as President. Call
Alan for info. 821-0164

January 26
**KHS Board/Com-
mittee Chairs**
6:00 p.m.
KHS Program:
7:00 p.m.
ART KNUTSON
Author of *Things That Made
a Difference, 25 Years of
Public Service*, will tell us
through his multitude of stories
about the building of Kirkland's
infrastructure, from roads to
water towers!

*Unless otherwise noted KHS
meetings are held the last
Wednesday of the month at 7
p.m., Kirkland Congregational
Church, 106-5th Ave.*

MEMBERSHIP FORM

July 1, 1998 - June 30, 2000

KHS now qualifies for tax exemption under 501(c)(3) and your contribution is deductible to the extent allowed by law. We now qualify for match contributions by those employers who offer this benefit.

- Individual \$20
- Family \$25
- Senior/Student \$15
- Supporting \$100
- Life Member \$1,000
- Organization/Government \$100
- Professional/Business \$125
- Corporate \$250

TOTAL ENCLOSED: _____

My Company Matches Contributions
Contact: _____

VOLUNTEER OPPORTUNITIES

Your membership is the first important step in helping achieve our goals. Interested in helping on other projects? Please indicate the areas in which you would be able to volunteer.

Serve on a Standing Committee:

- _____ Archives and Collections
- _____ Membership and Funding
- _____ Monthly Programs
- _____ Oral History
- _____ Newsletter, Blackberry Preserves
- _____ KHS Web Site

Work on specific activity:

- _____ Christian Science Church Renovation
- _____ Funding: Pledge Drives, etc.
- _____ Volunteers: Carpentry, Painting
- _____ Community Events / Exhibits
- _____ Home Tour
- _____ Do Photography / Update Slides
- _____ Video on Kirkland History
- _____ School Education Program

Name _____
Address _____
City _____ State _____ Zip _____
Home# _____ Work # _____
E-Mail _____
Organization/Firm _____

Checks should be made payable and mailed to:
Kirkland Heritage Society, 235 - 10th Ave. W.,
Kirkland, WA 98033. Phone: (425) 889 - 9120



Looking South on Lake Street with a light dusting of snow about 1929.

Blackberry Preserves is produced by the **Kirkland Heritage Society**, 304 - 8th Ave. West, Kirkland, WA 98033, for KHS members and those interested in Kirkland's past. To contribute articles or for more information on KHS, please call Barbara Loomis, Publisher, (425) 827-7194 or E-Mail: bloomis@msn.com



Kirkland Heritage Society

Kirkland Heritage Society
304 - 8th Ave. West
Kirkland, WA 98033