

Blackberry Preserves

The Journal of the Kirkland Heritage Society



WAITING

FIRST IN LINE TO GO TO SEATTLE IS A MODEL A

Taken in spring of 1947 the Leschi has just discharged its cars and passengers. Many of the buildings are still there today and recognizable. Kirkland was one of the first cities in the area to change to mercury vapor street lights. In this photo the new mercury vapor lights are in place but the old globe lights are still in use. When this photo was taken, King County had just decided to drop support of the Kirkland Ferry because of financial loss. The City of Kirkland took over as operator of the ferry, but alas, the tax base of the small city could not support the ferry either. In early 1950 many proposals were made but none worked out and on August 30, 1950 just before noon the final crossing was made. After 50 years there was no longer a ferry from Kirkland to Seattle.

Photo and text courtesy of Frank Rosin (See story page 5)



Kirkland Heritage Society

MAY PRESIDENT'S LETTER
Bob Burke

How about the big news of the **City of Kirkland** and **Kirkland Heritage Society** being selected for the first **John D. Spellman Award** ?? On behalf of KHS I want to thank everyone involved on City of Kirkland Staff, Boards and Council for all their help! Sometimes the issues were contentious, but over the past decade there has been a growing understanding of historic preservation and it's important role in maintaining our community's unique character. The major activities of the past two years including saving the Christian Science Church have been outstanding!

In addition, thanks to all of the members of KHS - board, committees, individuals - who have contributed to the many KHS activities that have combined to make our total effort work so well !!

In addition to the awards, for me, personally, this is a very special month! For the first time in six years all four of my children, their spouses and seven grandchildren were together! A wonderful reminder of why it is so important to preserve our history! Of course, we looked at the Church and they thought it was great! How could they not say that? The kids were frustrated because they couldn't go inside the fence to climb the stairs!

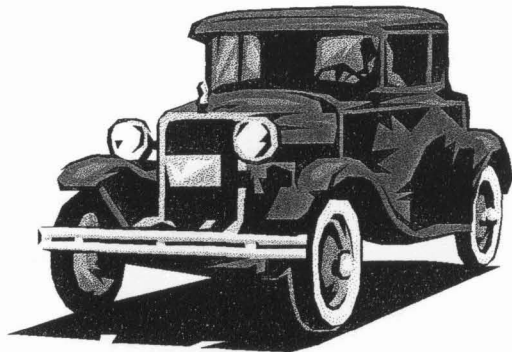
Our last program was wonderful! What a treat to learn from David Martin, Martin-Zambito Fine Arts, Seattle, about the early northwest artists who were known nationally and internationally and were really not recognized here. Thanks, again to **Shannon Harris**, Program Chair! This month's program should really be fun! It is also the Board election, so please plan to attend! We'll have a short update on the Downtown Strategic Planning effort.

We need volunteers! **Oral History Committee;**
Communications Committee (Bylaws amended); and
Waverly Park Site Advisory Group.

**CITY OF KIRKLAND RECEIVES AKCHO
HISTORIC PRESERVATION AWARD**

The City of Kirkland will receive a Certificate of Recognition from the **Association of King County Historical Organizations (AKCHO)** at their May 30th meeting at MOHI (Museum of History and Industry.) This is given for the City's outstanding effort in saving, moving and placing the Christian Science Church building on a foundation at the Waverly site..

M A Y M E E T I N G



**CALLING ALL VINTAGE
CAR
ENTHUSIASTS**

Imagine yourself in the drivers seat rumbling along Waverly Way back in May of 1930

Don't miss the opportunity this May to see and feel vintage automobiles from the Evergreen Model A Car Club. Several members who live in the Kirkland area will be there with their cars and fashions to explain a little about the cars and the fun many have driving them on a regular basis. This special show, brought to us by our own KHS member Frank Rosin, will be held in the front parking lot of the Kirkland Congregational Church on 1st street, on May 31st at 7:00 p.m.

**CITY OF KIRKLAND / KIRKLAND HERITAGE SOCIETY:
PARTNERSHIP FOR PRESERVATION
CHOSEN FOR FIRST ANNUAL (2000) KING COUNTY EXECUTIVE'S**

**JOHN D. SPELLMAN AWARD FOR
EXEMPLARY ACHIEVEMENT IN HISTORIC PRESERVATION**

We were just informed that the City of Kirkland and the Kirkland Heritage Society were chosen to receive the first King County Executive's award on May 30 at 9:30 a.m. at MOHAI (Museum of History and Industry.) This is a new award for this millennium. It was named in honor of John Spellman, former Governor and King County Executive when the County's historic preservation program was established.

The award nomination highlighted a number of significant historic preservation activities that occurred during the past two years but noted that these are the culmination of a growing ten year partnership between the City and KHS. The major actions include:

- Granting KHS \$42,000 to hire a professional historic preservation consultant - Mimi Sheridan - to inventory some 215 properties.
- Installation of 200 street signs with the original street names based on research by KHS.
- Development of the joint program for historic interpretive markers with eight markers being installed in the past two years and 7 more underway.
- Supported Downtown on the Lake based on the MainStreet Program with its historic preservation principles.
- Supported one of KHS's member's participation in a state-wide planning and historic preservation program to obtain information for the Planning Commission and Staff,
- Provides annual grant of \$2,000 to KHS to maintain display at City Hall, assist planning department in reviewing historic properties and to provide photographs for City Update.

In addition, all of the efforts on the initial inventory, comprehensive plan goals and policies, award-winning report on *Historic Preservation: City of Kirkland* and other activities were included!

In the letter informing us of this award, Julie Koler, King County Historic Preservation Officer, noted: *"I would like to congratulate KHS and the City of Kirkland for their commitment to preserving Kirkland's rich heritage, and for providing a model of partnership that I hope will be emulated by communities throughout King County!"*

We also received a letter from Jim Lauinger, Board Chair, Kirkland Chamber of Commerce, who said: *"Congratulations to you, your board and the volunteers at the Kirkland Heritage Society for being the first recipient of King County's John D. Spellman Award. All of us at the Chamber appreciate the work you do in protecting this community's rich heritage. This honor is testimony to your excellence!"*

EVERYONE IS INVITED TO ATTEND THE AWARD CEREMONY!

NOMINATIONS FOR MAY ELECTION

The election for Board Members serving from July 1, 2000 through June 30, 2002 will be held at the May meeting. Nominations for the positions are as follows:

- Treasurer: **Nancy Stephens**
- At-Large * **David Cantrill**
- At-Large: **Vic Newhard**

* Assumes Bylaws are modified

Nominations can be made from the floor; however if the person being nominated is not present, they must have submitted a written indication that they are willing to serve if elected.

CHANGE OF BYLAWS

The Board of Directors is recommending three changes to the KHS Bylaws:

1. Make the position of Communication Office on the Board an At-Large Position.
2. Establish a Communication Committee with the responsibility for *Blackberry Preserves* and coordinating articles for the *Kirkland Courier*, *City Update* and other publications.
3. Minor clarifications including the process by which the Past President serves on the Board when an at-large position is already filled.

Specific language of these changes will be available at and voted on at the May meeting. If these amendments pass, we will need to get volunteers to work on the Communications Committee. Barbara Loomis has said she will help in the transition.

**A HIDDEN PAST
An Exploration of Eastside History**

AVAILABLE THROUGH KHS FOR \$5.95

During last year *The Seattle Times* published a series of articles on the hidden history of the Eastside. These articles have been put into an attractive 104 page book. They also made them available to us at their cost so it will act as a fund-raiser. Copies will be available at our meetings as well as at the SummerFest booth in July and Taste of Kirkland in September.

ORAL HISTORY PROGRAM

Nancy Stephens has resigned at the Chair of the Oral History Committee. She's finding the duties as treasurer, doing some articles on oral history for the Kirkland Courier and chairing the committee are just too much! **Erika Kahler** has agreed to pick up the committee responsibility and we would like to find a co-chair for the committee.



WAVERLY PARK SITE ADVISORY GROUP

The City of Kirkland has requested that KHS appoint one member to serve on the 10 to 12 person advisory group to assist with the development of the design program for the park site. The group will work with the design consultant during the summer months in an effort to create a design program identifying the types of uses and activities for consideration as part of an overall design for the park. The design program will be reviewed for comment by the public this fall at a series of public workshops. Based on these workshops a recommendation will be submitted to the Kirkland Park Board who will subsequently forward a recommendation to the City Council for approval.

We need a volunteer to represent KHS on this important advisory group. If you are interested, please contact Bob Burke at 828-4095 or 827-6550.

We need to make the appointment by June 2, 2000.

The master plan process for the Waverly site is now officially underway. A committee of interest groups - including KHS - will be established and the first task is to determine the uses for the site and for the building by this fall. The second task will then do the plan for the site in 2001. It is important to know the use of the building because it impacts the potential of KHS to be eligible for some of the available restoration funds.

THE MODEL A, 1927 - 1931

by Frank Rosin

From the four years between 1928 and 1931 about five million Model A cars and trucks were manufactured by Ford. It is estimated that worldwide there are about a half a million of them remaining either as museum displays, operating cars, or cars waiting to be put in operating order. The Model A is a well built car, put together with quality materials, built to last even with less than professional care.

Henry Ford became famous and wealthy by building over fifteen million Model T over a 20 year period before 1928. He was unwilling to change but competition from the other car manufacturers with newer and better models of cars eroded his share of the market. He even went as far as firing anyone that even suggested he change from the Model T. But he could not fire his son, Edsel, who finally convinced him a change was in order. Edsel was mostly responsible for the design of the Model A. The car could be purchased in all body styles and many striking colors from sporty roadsters to family oriented tudor and fordor models to pickup trucks and heavy commercial trucks. All had the same engine and frame and fenders except for the commercial trucks. Even those had the same engine mounted in a heavier frame.

The Model T assembly line was shut down in early 1927 and the New Ford was designed. Only a half a dozen parts, other than standard nuts and bolts, were used in the New Ford, it was a complete redesign. Slowly in December of 1927 the New Ford started to come off the line. The Model A was never referred to as a Model A by the Ford Company. It was always the New Ford. The Model A name came from the A which was stamped as part of the serial number on the engine block and car frame and the A which was a part of all the service part numbers.

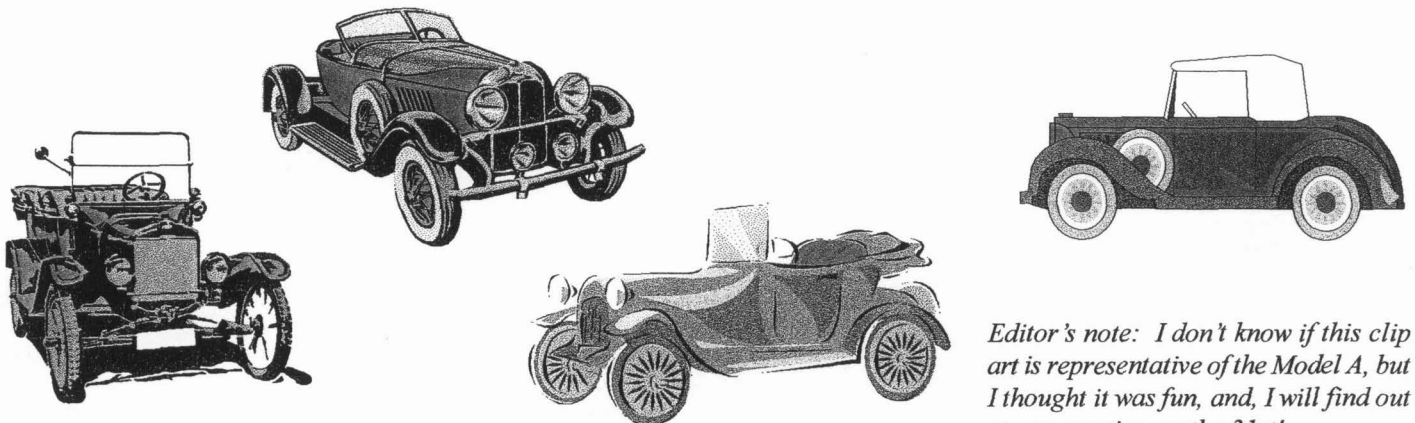
In late 1931 competition and the deep economic depression again eroded the market share for Ford and newer more powerful, more streamlined cars replaced the Model A.

The Model A was well built and lasted and lasted and lasted, many through WW2 and beyond. It is a comfortable car to drive and ride and unlike many of the competition had few wood parts. The others with wood simply were not durable and have not lasted.

The Evergreen Chapter of the Model A Ford Club of America began in Seattle a little over 42 years ago to exchange ideas about the Model A and restoration in its original likeness and to have fun getting together talking about their common interest. Today there are over 200 families in the club here in Seattle and over 15,500 families nationally. There is a Northwest Regional Meet every year somewhere in the Northwest, this coming August it will be in Olympia and may have as many as 400 families registered. The National Meet this year in July is in Kansas City.

The Evergreen A's meet every month on the second Friday in Bellevue and have technical seminars also on a monthly basis along with tours, parades, and other social activities. Besides just restoring the cars just to drive, some are restored to pristine, just out of the showroom condition and are gems to behold.

1928 to 1931 were exciting years in the fashion scene too. Both men and women along with restoring and driving their cars are having a great time finding or reproducing the era clothing to augment the feel of the Model A era. Era garments although not easy to find are available. Patterns from those years are also still around and reproduction clothing can be fabricated using era type materials.



Editor's note: I don't know if this clip art is representative of the Model A, but I thought it was fun, and, I will find out at our meeting on the 31st!

ARCHITECTURAL STYLES

by Barbara Loomis



I thought it would be fun to look at some of the architectural styles in Kirkland, and what makes them so. The first one is the Peter Kirk building on Market Street, built in 1891 by the Kirkland Land and Improvement Company. It is classified as:

Romanesque Revival 1880's - 1900

Wide rounded (Romanesque) arches over windows, porch supports or entrance. Masonry patterned walls or rusticated stone. Round towers with bow windows and a conical roof. Asymmetrical facade. Groupings of three or more arched or rectangular windows. Parapet.

STATUS OF CHURCH BUILDING

If you have been past the Waverly site, you've seen the new stairs are in place and the work is nearly complete. **Oops**, now they're gone! Evidently they didn't meet the City's standards so they have to be redone.

Lee Beard, Page & Beard, Architects, (KHS Members) has agreed to assist in coming up with a color scheme reflecting the historic context of the building. Samples of the exterior paint tested for lead and the city is obtaining bids from professional painters to do the preparation and prime coat. We still assume we will be doing the final coat sometime this summer and, we just got a lead on someone who is willing to donate paint!

WEB SITE

The KHS Web site is up and running thanks to **Stephanie Loomis** who designed it and **Alan Stein** and History Link for hosting it. The address may change later but for now you can access it at: <http://www.historylink.org/khs>. We hope to add a Calendar but that will come later, we just wanted to get it up and running!

M E M B E R S H I P

WELCOME NEW MEMBERS

Andrew & Freeman Held
Jennifer Smith

THANKS FOR YOUR PROFESSIONAL MEMBERSHIP

Penny Sweet and Larry Springer, The Grape Choice

THANKS FOR YOUR RENEWAL

Susan Carter
David Millar

**K I R K L A N D
HERITAGE SOCIETY**

DIRECTORY

OFFICIAL ADDRESS:
304 - 8th Avenue West
Kirkland, WA 98033
Phone: (425) 827-7194

OFFICERS AND BOARD

President: Bob Burke
827-6550 (o) 828-4095(h)
Vice President: Alan Stein
821-0164
Secretary: Loita Hawkinson
827-1950
Treasurer: Nancy Stephens
822-9475
Communications:
Barbara Loomis 827-7194
At Large Member:
Melissa Thirloway 889-9120
At Large Member:
Vic Newhard 820-5151 ext.233

COMMITTEE CHAIRS

Archives
David Cantrill 821-4021
Melissa Thirloway 889-9120
Oral History
Erika Kahler 823-6232
**Historic Buildings
and Planning**
Vic Newhard 820-5151 ext.233
Velda Wilson 641-0528
Membership and Funding
Melissa Thirloway 889-9120
Programs
Shannon Harris 822-2478

SPECIAL ACTIVITIES

Exhibits:
Vic Newhard 820-5151 ext.233
Web Site:
Stephanie Loomis 827-7194

CALENDAR

**CELEBRATE
HERITAGE MONTH
IN MAY**

May 30

**AKCHO
9:30 a.m.**

Annual Awards Ceremony
Museum of History &
Industry (MOHI)
2700 - 24th Ave. East, Seattle
(In Seattle's Montlake Nhd)
City of Kirkland will receive
a Certificate of Recognition.

MAY 30

**KING COUNTY
EXECUTIVE'S FIRST ANNUAL
JOHN D. SPELLMAN AWARD
FOR ACHIEVEMENT IN HIS-
TORIC PRESERVATION
10:30 am to 11:30 am**
Right after the AKCHO
Awards at MOHI
**CITY OF KIRKLAND / KIRK-
LAND HERITAGE SOCIETY
WILL RECEIVE THE AWARD.
PLAN TO ATTEND
BOTH CEREMONIES**

MAY 31

**KHS Board/Comm.
6:00 pm
KHS Program
7:00 pm**

**Frank Rosin and the Ever-
green Model A Ford Club**
with their cars and vintage fash-
ions. In front of the Kirkland
Congregational Church on 1st
Street.

*Unless otherwise noted KHS
meetings are held the last
Wednesday of the month at 7
p.m., Kirkland Congregational
Church, 106-5th Ave.*

MEMBERSHIP FORM

July 1, 1998 - June 30, 2000

KHS now qualifies for tax exemption under 501(c)(3) and your contribution is deductible to the extent allowed by law. We now qualify for match contributions by those employers who offer this benefit.

- Individual \$20
- Family \$25
- Senior/Student \$15
- Supporting \$100
- Life Member \$1,000
- Organization/Government \$100
- Professional/Business \$125
- Corporate \$250

TOTAL ENCLOSED: _____

My Company Matches Contributions
Contact: _____

VOLUNTEER OPPORTUNITIES

Your membership is the first important step in helping achieve our goals. Interested in helping on other projects? Please indicate the areas in which you would be able to volunteer.

Serve on a Standing Committee:

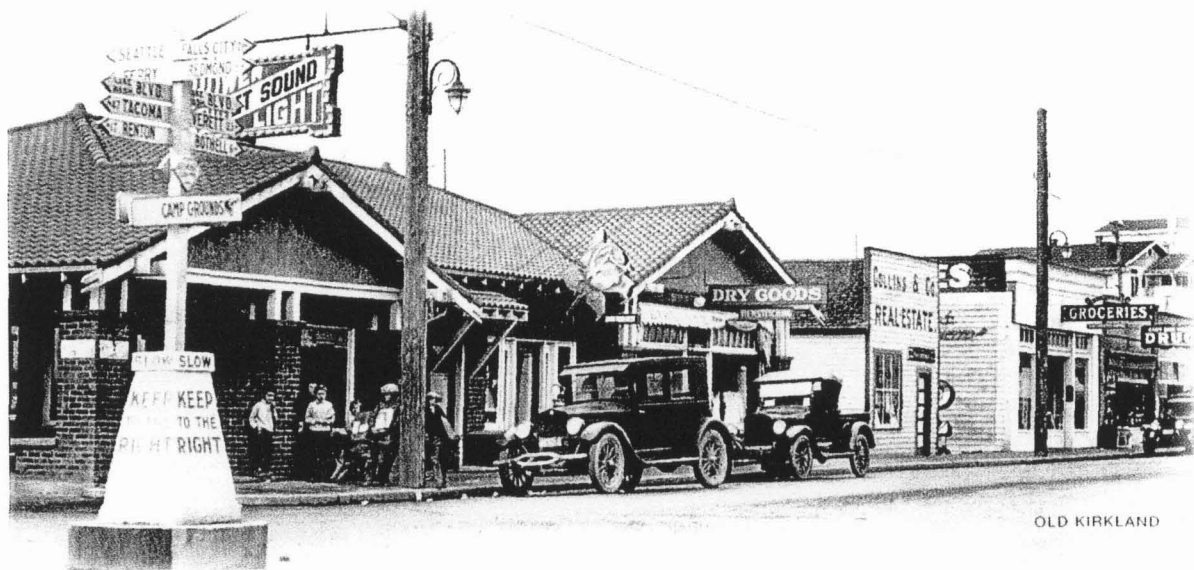
- _____ Archives and Collections
- _____ Membership and Funding
- _____ Monthly Programs
- _____ Oral History
- _____ Newsletter, Blackberry Preserves
- _____ KHS Web Site

Work on specific activity:

- _____ Christian Science Church Renovation
- _____ Funding: Pledge Drives, etc.
- _____ Volunteers: Carpentry, Painting
- _____ Community Events / Exhibits
- _____ Home Tour
- _____ Do Photography / Update Slides
- _____ Video on Kirkland History
- _____ School Education Program

Name _____
Address _____
City _____ **State** _____ **Zip** _____
Home# _____ **Work #** _____
E-Mail _____
Organization/Firm _____

Checks should be made payable and mailed to:
Kirkland Heritage Society, 235 - 10th Ave. W.,
Kirkland, WA 98033. Phone: (425) 889 - 9120



OLD KIRKLAND

A Model A Ford Parked on Lake Street

From the Back Cover of *A HIDDEN PAST* by The Seattle Times

Blackberry Preserves is produced by the Kirkland Heritage Society, 304 - 8th Ave. West, Kirkland, WA 98033, for KHS members and those interested in Kirkland's past. To contribute articles or for more information on KHS, please call Barbara Loomis, Publisher, (425) 827-7194 or E-Mail: bloomis@msn.com



Kirkland Heritage Society

Kirkland Heritage Society
304 - 8th Ave. West
Kirkland, WA 98033