

# **Blackberry Preserves**

**The Journal of the  
Kirkland Heritage Society**



**CITY COUNCIL DESIGNATES USE OF HISTORIC  
BUILDING AS COMMUNITY MEETING HALL AND  
HERITAGE RESOURCE CENTER FOR KHS**

**Volume IX Issue 1**

**January / February 2001**



Kirkland Heritage Society

### PRESIDENT'S LETTER

First, I'd like to apologize to the Membership for the gap in our communication in December and for this issue being so late. The holiday season and all the activity surrounding the church building consumed our available time! **However!**

On January 2, 2001, the **Kirkland City Council** adopted the recommendations of the Waverly Advisory Group (**Michael Radcliff** was the KHS Representative) and the Park Board for the Waverly Park site. Included in those was the designation of uses for the historic 1922 church building to include **community meetings and a heritage resource center** for KHS. The Waverly Advisory Group worked over four months and held two community meetings with extensive input! The Park Board met in December and recommended the design program to City Council. **Thank you to everyone for their effort and inclusion of the historic building and KHS.**

Four years ago when the American Legion Hall was for sale, KHS started to think seriously about the desirability of having a home! At that time the Board adopted as part of its 5 year plan the goal of having a permanent space by our 25<sup>th</sup> Anniversary in May, 2002. We are very close to achieving that goal! See the article on the Church Update to see all the ongoing activity.

### NEW YEAR RESOLUTIONS

Hopefully your New Year Resolutions included the **Kirkland Heritage Society!** **Why?** KHS is truly entering into a new stage of its development as an organization. We need not only to meet our commitment to renovate the church building, but also to continue our array of successful activities. Please check out the "Classifieds" on page 6.

### EXCITING JANUARY PROGRAM

January 31, 2001 - 7:00 p.m.  
First Congregational Church  
106 - 5<sup>th</sup> Avenue

## A CHANGE OF WORLDS Slide Presentation

**Greg Watson, Director**  
**Marymoor Museum**

This program is co-sponsored by Marymoor Museum and is an illustrated history of Native Americans in the Puget Sound area from 1850 to 1950.

The Board and Committee Chairs will meet at 6:00 p.m. prior to the monthly meeting.

### KHS WEB SITE

[www//.historylink.org/khs](http://www.historylink.org/khs)

**Dale Hawkinson** has taken over the upkeep of our KHS website. It has been expanded with a printable order form for purchasing a paver or becoming a member. The monthly programs are posted and candid photographs from KHS events and meetings.

### NORTH ROSE HILL NEIGHBORHOOD HISTORY

**Mary Alyce Burleigh** has volunteered to do research and prepare a neighborhood history of North Rose Hill. This will be incorporated into the update of the sub-area plan that is currently underway by a Citizen Advisory Group and the City. One of the goals of KHS is to have a history of every neighborhood to provide a context for the property inventory done a year ago and to place them in the City's Comprehensive Plan as the neighborhood plans are updated. Volunteers from other neighborhoods?? Call 828-4095!

## UPDATE ON CHURCH RENOVATION

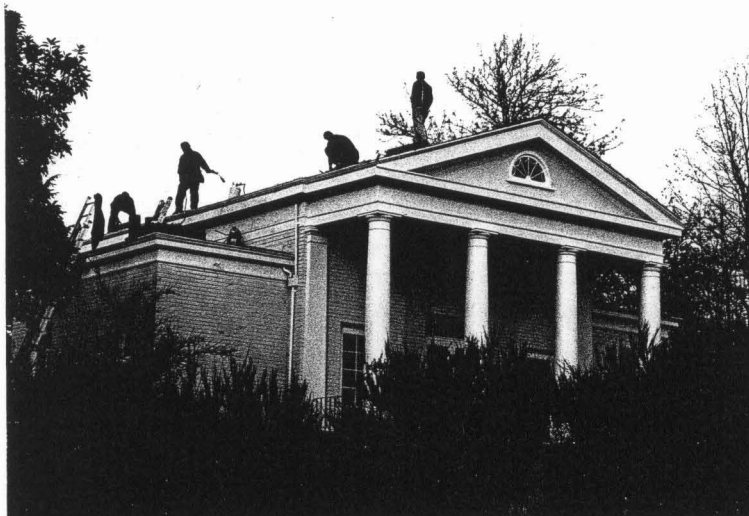
Over the next few months, the activity on the Church renovation and fundraising efforts will increase dramatically!! Obviously, this is a major effort for KHS and will be the focus of our attention for the next year. To put it into perspective, our preliminary estimates are that we need to raise about \$230,000, not including present funds committed by the City. It includes cash, grants, volunteers, donations, pavers, etc.

## BUILDING RENOVATION COMMITTEE

There is a committee that is working on a variety of projects relative to the building: Paver Sales; Contributions; exploring Foundation Grants; Demolition and Construction volunteers; Waverly Advisory Group and contacting Corporations. If you want to help call Bob Burke, 828-4095.

## PRESENT CONSTRUCTION ACTIVITY

The following photograph shows the crew working on the re-roofing of the building. A plywood layer and straps connecting across the rafters were installed to meet current seismic design requirements. **Mark Johnston**, Parks Department, is presently working on bids to install required handrails on the stairs and ramps and new windows in the lower floor.



*Crew Installing New Roof*

## MATCHING GIFT FROM JERRY & PATTI MARSH

A very large "Thank You" to **Jerry & Patti Marsh** who matched the \$3,000 pledge made by **Bill Ballantine**. This brings total contributions for renovation of the church to over \$15,000. These funds provide us flexibility in meeting grant match requirements and in doing the necessary work to complete the renovation.

## CARVE YOUR NAME IN STONE

The Wilkeson Stone Pavers that KHS is selling to help renovate the Church have reached a couple milestones: Nearly 100 of the 6 inch pavers have been sold; and 8 of the 12 inch pavers have been sold or reserved. We are actively contacting schools, service clubs, and neighborhood associations. It is very rewarding to have the community interest, but there is a lot of work to be done - our goal is 2000 small pavers and 60 large pavers. This will raise about \$60,000 for the site work, landscaping and church renovation. If you haven't sent in your order form, please do it now! Also, we gave you extra for friends and relatives, so please pass them along. If you need more forms, see our website or call 828-4095.

## HISTORIC PRESERVATION GRANTS

Two of the major historic preservation grant applications are due this month. On January 22<sup>nd</sup> we submitted a request to King County under their Landmark and Heritage Cultural Facilities Program and on the 31<sup>st</sup> we will submit to the State for their new Preservation Works for Washington Program.

**Lee Beard, Page & Beard, Architects**, and **Donna Nicholson, Nicholson Builders, Inc.**, are volunteering time to help scope out the grant projects and develop preliminary drawings and cost estimates. **Bob Burke** is compiling these grant applications. In both cases we will know in about three months if we are successful!

*Tales from the East Side Journal*

*Presented by Alan J. Stein*

A while back, I had the distinct privilege of interviewing Chris Wedes and Bob Newman for an article I was writing for HistoryLink.org. Chris and Bob who? Why, none other than J.P. Patches and Gertrude themselves, Patches Pals, those two wacky guys who are still loved and adored by kids of all ages (or at least those from the teevee generation). Last month, I got a chance to meet them again, this time in costume -- them, not me (well, sort of... see picture on back page).

What does all this have to do with Kirkland, you might ask brusquely, while aiming a cream pie at my face? Well, lemme tell ya. When the J. P. Patches show was on air in its early days, Gertrude, I mean Mr. Newman, used to reside here in town. At the time, very few Kirkland residents realized that an ex-Navy Frogman who wore a dress and army boots for a living was one of their neighbors. This truly was the Golden Age of Television.

This month's Tale from the East Side Journal, written by Arline Andre (then Stokes), was published on May 14, 1969, and tells the tale of Bob Newman, from a Kirkland perspective. So fill your knickers with shaving cream, sit down, and enjoy the ride.

**At Home He's Bob Newman, At Work He's 'Gertrude'**

At first glance, Bob Newman looks like everyone else ... he leaves for work every morning just like an average citizen and heads for Seattle just like a large member of the East Side populace. But when he gets to work and confers with his business colleague, he may then change into an oversized woman's dress and a pair of combat boots. Or maybe he will a misguided choir's cape and head for the makeup room.

In case you haven't guessed, Bob Newman, a resident of the Bridle Trails area, is also "Gertrude, Miss City Dump", on the J.P. Patches television program, alias "Boris S. Wort, the Second Meanest Man in the World, alias 14 other characters.

Newman, who has been with the J. P. Patches show for 10 years, spends most of the segments trying to outsmart J. P. (Chris Wedes). Though the show is for children, it is a perpetual contest between Wedes and Newman to see who can put who down! The only parts of the show planned in advance are cartoons, commercials, and special announcements.

Bob was born and raised in the East Seattle area (Mercer Island). "We lived there in 1935, when there were only 300 people!" he says. Both he and his wife, the former Barbara Brown, graduated from Garfield High School. "After changing college majors 26 times, I decided to quit and help fight the Korean War", says Bob. "But as soon as I joined, they stopped fighting!"

Once more back at college, he changed majors again until he graduated into radio-television. He then went to work as a part-time floor director and a part-time film director at the KIRO channel 7, television station. One day while J.P. was speaking (into a station intercom) to his imaginary switchboard operator Gertrude, Newman (in a high-pitched voice) decided to answer back ... thus, Gertrude was born!

Then, two years ago, Newman left his position as part-time floor director and film director, and Gertrude became an important part of J. P.'s program. In addition, 15 other personalities emerged: Ketchikan the Animal Man, Charlie Can-Do (the detective), Ggoorrsstt the Friendly Furple, Stirdley the Book Worm, Chief Geoduck, Boris S. Wort, Mr. X. R. Cise, Miss Smith, Leroy Frump the City Dump Handyman, Officer Patty Wagon, Fred the Foot, the Swami of Pastrami, and several others.

Bob Newman doesn't decide until he gets to the studio which part he will play that day... it depends on the moods Newman and Wedes are in. Even then, the trend the program will take for that day hinges on perhaps one remark that will be made. From that, as much as a half-hour of tape will be adlibbed. If Newman looks surprised when he gets hit with a pie in the face or a bucket of water all over, the surprise is genuine. He rarely knows in advance of such plans.

"Getting hit with a pie is more difficult than you think," says Newman. "You have to let it drip just the right length of time and then turn to the camera and groan... precisely!" He also claims that splashing a bucket of water on someone takes a great deal of skill.

Gertrude is probably the best known of Newman's characters on the television program. She is constantly running after J.P. in her size 44 dress and naggingly screeching, "Julius, when are you going to marry me?" Where Gertrude manages to find dresses to suit her figure is another matter... "My wife makes them – out of nine yards of material!" laughs Bob. Gertrude's wardrobe is extensive... two dresses! But that doesn't count the wedding dress she has worn every June for the last couple of years. Somehow she never manages to maneuver J.P. to the altar.

As Boris S. Wort, the Second Meanest Man in the World (with his famous chuckle) Newman finds it difficult to purchase men's tights to fit his six foot four muscular frame. Somehow the salesmen can't believe he's a ballet dancer – and what else would a grown man want with a pair of tights?

On personal appearances, J.P. and Gertrude meet more people in one year than the average person does in a lifetime. This gives "Gertrude" a deeper insight into the human personality.

Like the grocery store episode where a young boy hit Newman in the leg with a two by two. Newman, playing the dying scene to the hilt, was agonizing with great relish when the parent of the child walked up and said, "C'mon Herbie, leave him alone..." without even glancing at Newman's leg!

Then there was the time on television when Bob, as Ketchikan the Animal Man, was practically being choked by a poisonous snake until Don Berry (of the Woodland Park Zoo) came to his rescue. "The next day," bemoans Newman, "We were besieged with letters and phone calls about the poor little snake being manhandled!"

While Bob usually leaves home in normal attire and then changes at the studio, on some of these Saturday morning appearances, he dresses as Gertrude at home. The neighbors have gotten used to seeing him like this, but some of the motorists he encounters are really surprised. Occasionally he will encounter a hippy who thinks he's one of them!

Bob, an ex-Navy Frogman, used to give wine tasting parties. His other interests include barbecuing... which is appreciated by his family, including Barbara and two sons Paul and John, students at Ben Franklin Elementary School. But his real interest is in concrete... he has three patios! "Everybody's got a thing," says Bob, "I guess you'd say I dabble in cement."

In addition to concrete work, Newman has knocked out walls in their home, done some remodeling and a little plumbing too. Would you believe he's got an outdoor bathtub? On a nice morning, he rolls his bathtub outdoors (it's on wheels) and hooks it up to some outdoor plumbing on a patio that is secluded by an eight-foot windbreak, and basks in the sun!

It's no wonder after living by a personality like this, that Bridle Trails neighbors said, "If Bob Newman doesn't give you enough facts about his life... we will!"

# Classifieds

Payments for classified ads are due upon receipt of statement. A \$1.00 billing fee will be added for overdue payments.

## HELP WANTED

### KHS BOARD MEMBER

There is a vacant position on the KHS Board, which is responsible for managing the business and assets of the corporation. Any member who has an interest in the purpose of the organization and who will devote the time and energy required should apply.

### COMMUNICATON CHAIR AND COMMITTEE MEMBERS

This committee publishes *Blackberry Preserves*, and coordinates articles and photographs for the *City Update* and *Kirkland Courier*. Articles are written by a variety of people and photographs are available in the archives. Skills needed range from desktop publishing to folding and sticking on stamps.

### MEMBERSHIP CHAIR AND COMMITTEE MEMBERS

This committee prepares membership information and sends out the annual dues notices. It also maintains the date base and mailing list for KHS. It organizes special membership campaigns and responds to requests for membership information.

### COORDINATE INTERPRETIVE MARKER PROGRAM

We have five interpretive markers that need to be done. It requires someone who can coordinate with the donor, work with the people writing the text and coordinate it with the graphics person, production company and parks department.

## HELP WANTED

### CHURCH RENOVATION

#### COORDINATE PAVER SALES

During the next 5 to 5 months the effort to sell the Wilkeson Stone Pavers will increase and we need a couple people to make presentations to groups, mail, distribute and organize order form and talk to businesses about buying the larger 12" square paver. They are selling well, but we need to get the word out to everyone!

#### CONSTRUCTION AND DEMOLITION VOLUNTEERS

There is work that can be done on the interior to remove existing walls and generally prepare the space for new construction. There will be opportunities to do dry wall, paint, etc.

Call Don Winters 827-2650

#### CAPITAL FUND CAMPAIGN

Experience working on one of these? We have a good start, but could certainly use your help!

#### TIME CAPSULE FOR CHURCH

Space was made for a time capsule to be installed at the Church building whenever it is dedicated. What should go in it? When should it be opened? Ideas? This could be great fun!

If you are interested in working on any one of the above committees or tasks, please call Bob Burke at 828-4095 or e-mail him at bob@mc-binc.com or contact the person listed with the description or committee.

## SERVICES

### GIVE RIDES TO MEETINGS

Some members require a ride to meetings, particularly during the winter months. We need a contact that people can call.

### PHOTOGRAPH MEETINGS

We do not keep a good record of our own meetings - and we should. Whoever does this would need a camera - KHS will pay for film and developing.

### CALL MEMBERS ABOUT MEETINGS AND EVENTS

We have the e-mail addresses of about half the members, but it would be really nice to have someone call the members.

### RESEARCH NEIGHBORHOOD HISTORY

One of our goals is to research and prepare a history of each of Kirkland's neighborhoods. We have a volunteer for North Rose Hill - how about doing your neighborhood? We have background information and it will take some conversations with old-timers in your area.

### WORK WITH OWNERS TO INSTALL PLAQUES

KHS set aside money to install our distinctive wooden plaques on buildings recognized by the City and KHS.

Vic Newhard 820-5151 233

### NOMINATION COMMITTEE

A special 3-person committee charged with finding candidates for Board positions prior to the Annual Election in May.

**K I R K L A N D  
HERITAGE SOCIETY**

**DIRECTORY**

**OFFICIAL ADDRESS:**

1032 - 4th Street  
Kirkland, WA 98033  
Phone: ( 425) 828-4095  
www.historylink.org/khs

**OFFICERS AND BOARD**

**President: Bob Burke** 828-4095  
**Vice President: Alan Stein** 821-0164  
**Secretary: Loita Hawkinson** 827-1950  
**Treasurer: Nancy Stephens** 822-9475

**At Large Member:**  
**David Cantrill** 821-4021  
**At Large Member:**  
**Vic Newhard** 820-5151 ext.233  
**At Large Member:**  
**To Be Filled**

**COMMITTEE CHAIRS**

**Archives**  
**David Cantrill** 821-4021  
**Melissa Thirloway** 889-9120

**Communications**  
**To Be Filled**

**Oral History**  
**Erika Kahler** 823-6232

**Historic Buildings  
and Planning**  
**Vic Newhard** 820-5151 ext.233

**Membership and Funding**  
**To Be Filled**

**Programs**  
**Shannon Harris** 822-2478

**SPECIAL ACTIVITIES**

**Exhibits:**  
**Vic Newhard** 820-5151 ext.233  
**Web Site:**  
**Dale Hawkinson** 827-1950

**CALENDAR**

**Board/Committee**

**Meetings** are normally held at 6:00 p.m. prior to the monthly meeting. Members are invited to attend.

**February KHS Meeting**

February 28, 2000, 7:00

**Toys and Games:  
Show and Tell**

**March KHS Meeting**

March 28, 2000, 7:00

**Junktique or Antique?**

**Julie Scott** Certified Appraiser and participant on Antique Road Show

**April KHS Meeting**

To be announced.

**May KHS Meeting**

Annual Meeting/Election

**Committee Chairs** will arrange meetings as necessary for work effort.

*Unless otherwise noted KHS meetings are held the last Wednesday of the month at 7 p.m., Kirkland Congregational Church, 106-5th Ave.*

**MEMBERSHIP FORM**

July 1, 2000 - June 30, 2001

KHS now qualifies for tax exemption under 501(c)(3) and your contribution is deductible to the extent allowed by law. We now qualify for match contributions by those employers who offer this benefit.

- Individual \$20
- Family \$25
- Senior/Student \$15
- Supporting \$100
- Life Member \$1,000
- Organization/Government \$100
- Professional/Business \$125
- Corporate \$250

**TOTAL ENCLOSED:** \_\_\_\_\_

- My Company Matches Contributions
- Contact: \_\_\_\_\_

**VOLUNTEER OPPORTUNITIES**

Your membership is the first important step in helping achieve our goals. Interested in helping on other projects? Please indicate the areas in which you would be able to volunteer.

**Serve on a Standing Committee:**

- \_\_\_\_\_ Archives and Collections
- \_\_\_\_\_ Membership and Funding
- \_\_\_\_\_ Monthly Programs
- \_\_\_\_\_ Oral History
- \_\_\_\_\_ Newsletter, Blackberry Preserves
- \_\_\_\_\_ KHS Web Site

**Work on specific activity:**

- \_\_\_\_\_ Christian Science Church Renovation
- \_\_\_\_\_ Funding: Pledge Drives, etc.
- \_\_\_\_\_ Volunteers: Carpentry, Painting
- \_\_\_\_\_ Community Events / Exhibits
- \_\_\_\_\_ Home Tour
- \_\_\_\_\_ Do Photography / Update Slides
- \_\_\_\_\_ Video on Kirkland History
- \_\_\_\_\_ School Education Program

Name \_\_\_\_\_

Address \_\_\_\_\_

City \_\_\_\_\_ State \_\_\_\_\_ Zip \_\_\_\_\_

Home# \_\_\_\_\_ Work # \_\_\_\_\_

E-Mail \_\_\_\_\_

Organization/Firm \_\_\_\_\_

Checks should be made payable and mailed to: Kirkland Heritage Society, 1032 - 4th Street Kirkland, WA 98033. Phone: (425) 828-4095



(See the article from the East Side Journal on pages 4 and 5)

**Alan Stein between Bob Newman and Chris Wedes  
(Also known as J. P. Patches and Gertrude)**

**Blackberry Preserves** is produced by the **Kirkland Heritage Society**, 1032 - 4th Street, Kirkland, WA 98033, for KHS members and those interested in Kirkland's past. To contribute articles or for more information on KHS, please call Bob Burke, President (425) 828-4095 or E-Mail: bob@mc-binc.com. KHS web site: [www.historylink.org/khs](http://www.historylink.org/khs)



Kirkland Heritage Society

**Kirkland Heritage Society**  
**1032 - 4th Street**  
**Kirkland, WA 98033**

