

Kirkland Heritage Society

WHY IS IT SO IMPORTANT FOR KIRKLAND TO HAVE A HERITAGE RESOURCE CENTER?

Kirkland has had a rich and interesting history over the past 125 years that needed to be researched, documented, preserved, displayed, understood and enjoyed by its residents. The Kirkland Heritage Society has taken on that task! For the past 25 years it has primarily been involved in research, collecting data, documents, maps, newspapers, photographs and conducting surveys of historic properties and doing oral history interviews of people who helped shape our community. In recent years this effort has expanded and KHS has become more active in the community. It has become increasingly apparent that there is need for an archival space with adequate storage and work area to support it and a place for citizens to be able to have access to the growing collections. We presently have a temporary archive that utilizes over 300 square feet of space, but does not provides work space or public access.

This emphasis on collecting and preserving the past 100 years of history needs to continue because there is much that we don't know and there are many photographs and documents that need to be found and preserved. However, we need to be in a position that we are actively collecting and preserving that information which at the end of the next hundred years will fully chronicle the life of our City.

PLEASE SEND IN YOUR CONTRIBUTION FORM NOW! AND - THERE IS STILL TIME TO BUY A WILKESON STONE PAVER!!

SEE OUR WEBSITE FOR AN ORDER FORM:
WWW.KIRKLANDHERITAGE.ORG
OR CALL 425 828-4095.

CARVE YOUR NAME IN STONE

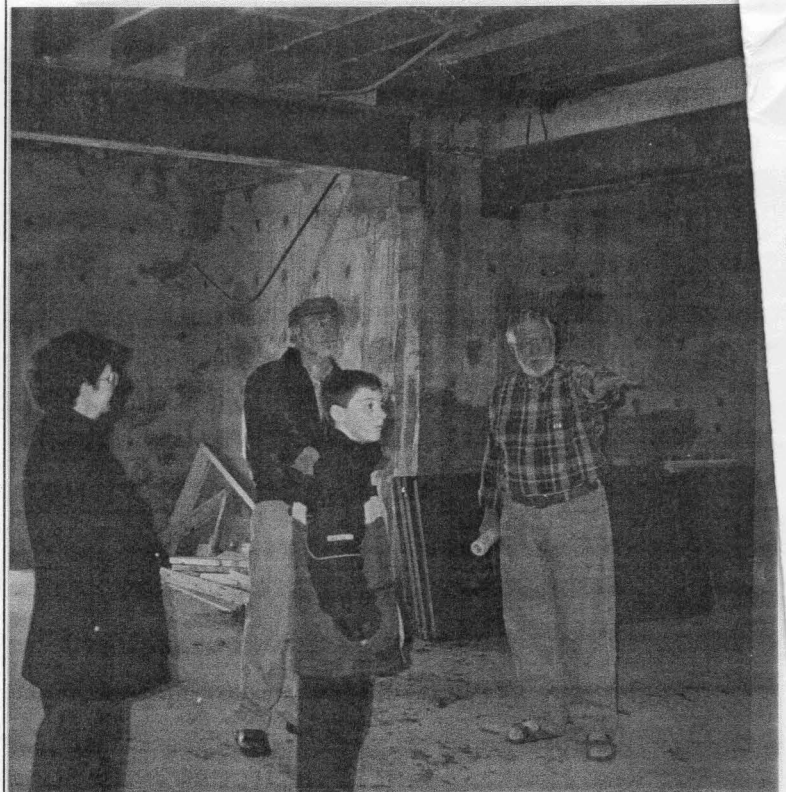
UPDATE ON BUILDING RENOVATION

**Bob Burke, Chair,
Building Renovation Committee**

As we were doing mailings last month asking people to purchase a paver or to contribute money for the renovation of the former church building as a Community Meeting Hall and Heritage Resource Center it struck us that we hadn't produced a document that summarized the entire project and described what we are working for so hard!

This is undoubtedly the most ambitious project ever undertaken by the Kirkland Heritage Society. It took a lot of research to make the case to save the building in 1999; to get it designated as a Historic Landmark; to work through the Waverly Park Master Plan process; to prepare the working drawings; and now to raise \$180,000 to renovate the historic elements and to complete a heritage resource center for our use.

This includes an obligation to operate the center and to provide for public access and research. It also provides a major opportunity to make Kirkland residents aware of our history and to expand the collections for future use and enjoyment!



Bob Burke showing Capron's the future Heritage Resource Center in February on Peter Kirk Day

Blackberry Preserves

USE OF THE BUILDING

In the Master Plan adopted by City Council for Waverly Park the historic church building is designated for use as a Community Meeting Hall and a Heritage Resource Center. The official zoning process for the site is now beginning and is scheduled to be complete in September 2002.

The historic upper floor will be the Community Meeting Hall and will accommodate about 60 people depending on the configuration of the seating. The previous Board Room will be restored as an office and storage to serve the building. There will be a small kitchen area for coffee and break-type food. Handicapped access will be from the terrace to the north. Special lighting is being included to highlight displays of historic photographs and materials.

The lower floor will have public space with a library / conference and research area that will have a glassed display for artifacts and memorabilia such as those recently donated by the Capron's. The archival space will be essentially surrounded with concrete with special humidity controls and security. The remainder of the space will be for files, making copies and areas to work on preserving collections, preparing displays and doing research on Kirkland's history.

WHAT WORK IS REQUIRED TO BE DONE?

From the exterior, the building looks like it is essentially finished except for landscaping. But, when it was moved, the stair between floors was taken out and there were no provisions for toilets or mechanical equipment left in the building.

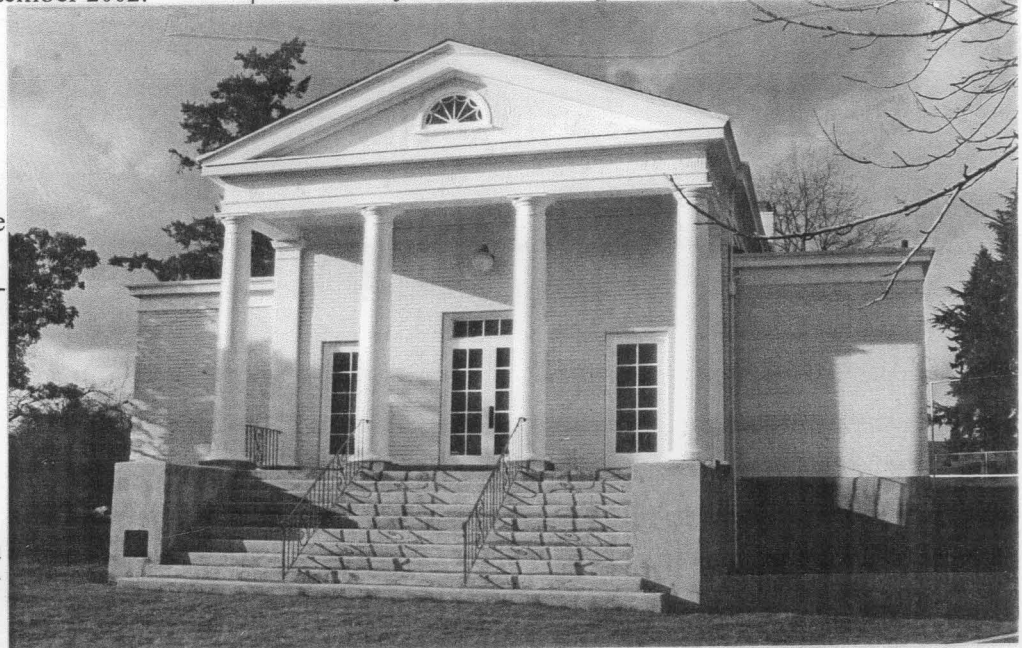
What has been done to date?

The City, in addition to moving the building and placing it on a foundation, has done the following:

- Extended Water, Gas and Sewer utilities and electricity to the building;
- Re-shingled the roof and made seismic improvements;
- Installed new windows and doors in the lower floor
- Painted outside of the building;
- Reworked outside railings to meet safety codes and installed new railings on the ADA access ramp to the lower floor; and

- Seeded the lawn area and installed some landscaping on slope areas.

Exterior of Church Building!



KHS volunteers did some work on the exterior prior to painting and have removed walls and materials added when the space was an office. We also put up the bunting last summer and placed garlands and lights on the building for the holiday season.

KHS hired Page & Beard, Architects; Premier Engineering, Inc., Structural Engineers, and Key Engineering, Mechanical Engineers to do working drawings for the project. Ron Murphy, Historic Preservation Architect has provided consultation. The plans are now being reviewed by the City to obtain a Building Permit by the end of April.

What work is still to be done?

The next work on the building includes:

- Building a new stair and adding an ADA accessible toilet on each floor;
- Seismic protection in the existing walls and attic space and placing a one-hour fire separation between the meeting hall and the lower floor;
- Air-conditioning the upper floor;
- Special air handling and humidifier for the lower floor and archive space.
- Communication equipment suitable for both uses and providing for future technology.

The bidding process will begin in May!

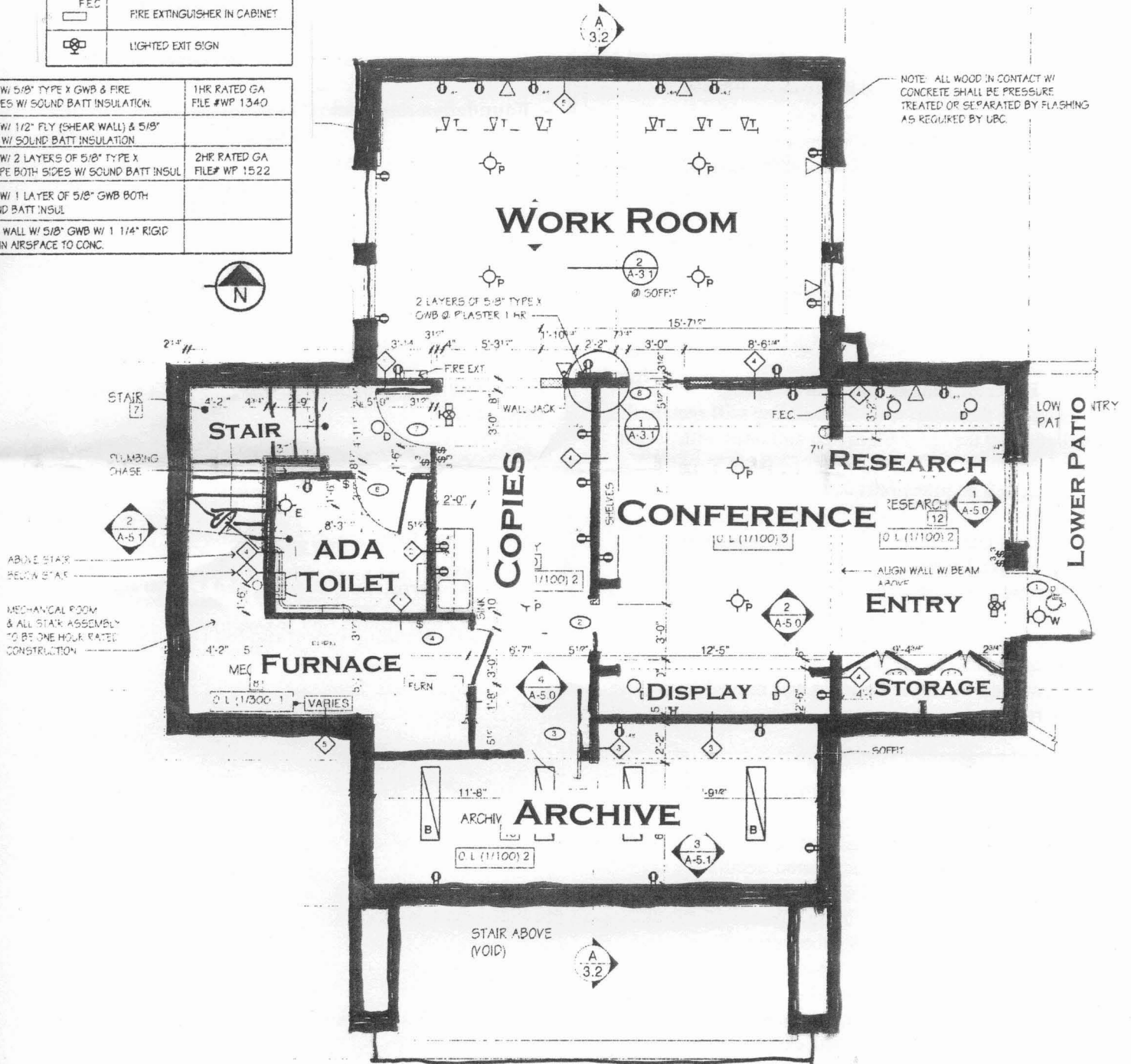
Blackberry Preserves

SHEET LEGEND

	SOUND ATTEN BATTS
	TELEPHONE
	DUPLEX RECEPTICAL
	GFCI PROTECTED RECEPTICAL
	DOOR SYMBOL
	WINDOW TYPE
	EXIST ACCESSIBLE EXIT
	WALL TYPE
	SINGLE POLE SWITCH
	FIRE EXTINGUISHER IN CABINET
	LIGHTED EXIT SIGN

TUD WALL W/ 5/8" TYPE X GWB & FIRE BOTH SIDES W/ SOUND BATT INSULATION.	1HR RATED GA FILE #WP 1340
TUD WALL W/ 1/2" FLY (SHEAR WALL) & 5/8" ONE SIDE W/ SOUND BATT INSULATION.	
TUD WALL W/ 2 LAYERS OF 5/8" TYPE X & FIRE TAPE BOTH SIDES W/ SOUND BATT INSUL	2HR RATED GA FILE # WP 1522
TUD WALL W/ 1 LAYER OF 5/8" GWB BOTH S W/ SOUND BATT INSUL	
T FURRING WALL W/ 5/8" GWB W/ 1 1/4" RIGID L & 3/4" MN AIRSPACE TO CONC.	

NOTE: ALL WOOD IN CONTACT W/ CONCRETE SHALL BE PRESSURE TREATED OR SEPARATED BY FLASHING AS REQUIRED BY UBC.



BASEMENT FLOOR PLAN

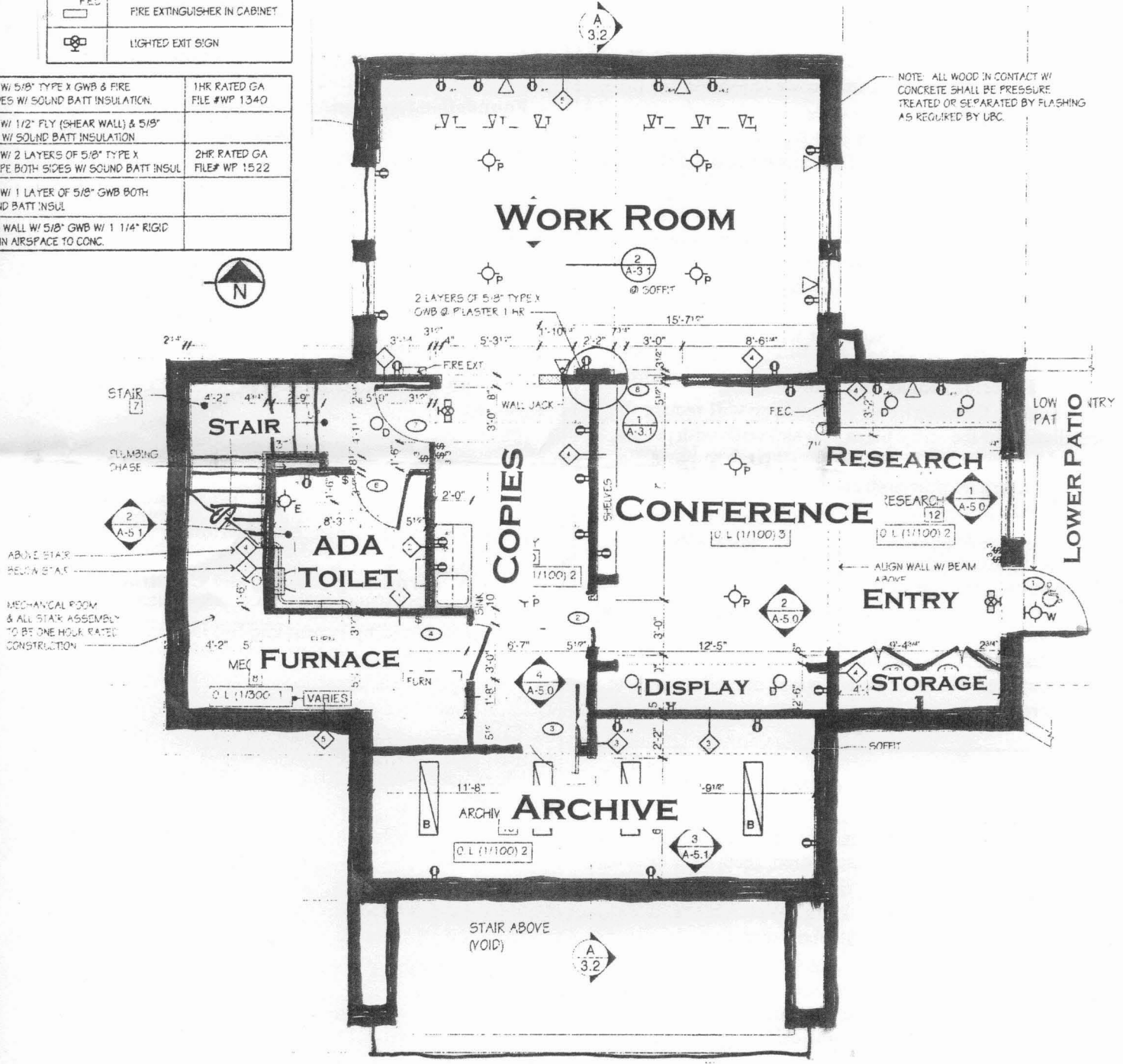
Blackberry Preserves

SHEET LEGEND

	SOUND ATTEN BATTS
	TELEPHONE
	DUPLEX RECEPTICAL
	GFCI PROTECTED RECEPTICAL
	DOOR SYMBOL
	WINDOW TYPE
	EXIST ACCESSIBLE EXIT
	WALL TYPE
	SINGLE POLE SWITCH
	FIRE EXTINGUISHER IN CABINET
	LIGHTED EXIT SIGN

TUD WALL W/ 5/8" TYPE X GWB & FIRE BOTH SIDES W/ SOUND BATT INSULATION.	1HR RATED GA FILE #WP 1340
TUD WALL W/ 1/2" FLY (SHEAR WALL) & 5/8" ONE SIDE W/ SOUND BATT INSULATION.	
TUD WALL W/ 2 LAYERS OF 5/8" TYPE X & FIRE TAPE BOTH SIDES W/ SOUND BATT INSUL.	2HR RATED GA FILE # WP 1522
TUD WALL W/ 1 LAYER OF 5/8" GWB BOTH S W/ SOUND BATT INSUL.	
T FURRING WALL W/ 5/8" GWB W/ 1 1/4" RIGID L & 3/4" MN AIRSPACE TO CONC.	

NOTE: ALL WOOD IN CONTACT W/ CONCRETE SHALL BE PRESSURE TREATED OR SEPARATED BY FLASHING AS REQUIRED BY UBC.



BASEMENT FLOOR PLAN

Blackberry Preserves

Upper Floor

Work on the upper floor to make it suitable for community meetings and to restore historic elements includes:

- Totally renovating the original meeting space including restoring the cove ceiling and lighting, adding appropriate light fixtures, refinishing the floors and plastering and painting.
- Restoring the former Board Room as an office and place to store equipment;
- Replacing aluminum windows with those of the architectural style and period of the building. and
- Providing a small kitchen area to make coffee, have a sink, refrigerator and microwave.

Lower Floor

The work on the lower floor is to be completed by the Kirkland Heritage Society. To make the space function it needs:

- Installation of walls, doors; and painting;
- Installation of cabinets (donated and new);
- New flooring and lighting;
- Construction of the display area and archive space; and,
- Obtaining furnishings (donated and new) to outfit the space.

Exterior Plazas and Landscaping

To complete the exterior of the building will require the installation of the entry plaza and sidewalk with pavers, terrace and sidewalk to the north and landscaping. We want to install an interpretive marker, and time capsule with bronze plaque.

Patrick Harris, landscape architect, has prepared a landscaping plan that utilizes plant materials of the period. It has been incorporated in the Waverly Park Master Plan. Provision has been made in the site plan to accommodate the re-connected public path. The significant tree that has to be removed when the building was moved on the site will be replaced.

WHERE IS THE MONEY COMING FROM?

The City of Kirkland provided the initial funding to move the building, place it on a foundation, secure the exterior of the building (paint, roof, railing and windows) and install the utilities to the building. WestWater Real Estate Service and Don & Sharry Stabbert contributed the building and \$25,000 to the City for this initial effort. The City has about \$100,000 remaining in their budget for the basic interior and seismic improvements: stairs, toilets, mechanical, plumbing and electrical work.

The Kirkland Heritage Society committed to help restore the historic elements of the upper floor and to be responsible for the construction of the lower floor if

allowed to use it for a Heritage Resource Center. That work is estimated to cost \$180,000.

KHS Fund Raising Strategy

KHS has a funding strategy that includes a number of potential sources:

	Goal	Raised to Date
- Sale of Wilkeson Stone	\$35,000	\$14,800
- Contributions from KHS Members and Friends:	\$35,000	\$23,500
- Government grants for Historic Preservation;	\$50,000	\$45,000
- Foundation and Business Grants.	\$60,000	\$5,000

To date we have been concentrating on the first three items and have raised nearly \$90,000. We obviously need to sell more pavers and to get more member contributions! In addition we have had over \$20,000 in-kind contributions of architectural services, furniture and volunteer time.

WHAT IS THE SCHEDULE TO COMPLETE THE PROJECT?

Our Goal is to complete the entire project by the end of October so occupancy can occur in November.

This involves three separate work efforts:

1. Permitting, Bidding and Construction of improvements:

- Complete Building Permit and Bid Documents
April 2002
- Bidding Process, Selection and Mobilization
May / June 2002
- Construction estimated at 4 months
October 2002

2. Zoning for Waverly Park

- Application submitted by Parks to Planning
Mid April 2002
- Review for Complete Application by Planning
Mid May 2002
- Hearing Examiner II-B Process and Council Approval
Mid September 2002

3 Exterior Walks and Landscaping

- Order Paver Materials - April 2002
- Begin front Walkway / Plaza - May 2002
- Grade for North Terrace
- Landscape - as materials/volunteers available
- Install Interpretive Marker - as funds available.

WHAT COLLECTIONS DOES THE HERITAGE SOCIETY HAVE?

The goal of KHS is to collect and protect documents, photographs and information about the history of Kirkland, its people and events and its buildings and sites not to create a museum. We will accept limited items directly related to the founders of the community. We plan that when an Eastside Heritage Center is established, that Kirkland will participate.

Our growing collection now includes:

- Peter Kirk and Fannie Kirk Capron Clothing donated by Caprons
- Documents and Memorabilia of Peter Kirk
- Over 2,000 Photographs of historic scenes including Walter Williams Collection
- East Side Journal newspapers from 1918 to 1976 with database of over 60,000 entries
- Post cards of historic Kirkland
- Oral History tapes and transcriptions
- Historic Property Inventory Forms and photographs of 292 structures in Kirkland
- Over 600 photographs of Community and KHS activities
- 500 Slides of historic properties and Events
- Community Data Books and historic Census Information
- Annuals of Kirkland Schools
- Title Abstracts and Maps of Kirkland
- Magazines such as the Eastside from the 1940's
- Historic Preservation books and magazines:
Historic Preservation, Old House Journal and Interiors, Bungalow, and Style1900.

MONTHLY PROGRAMS

NOTE THE CHANGE OF DATE FOR APRIL !!

APRIL 27 (SATURDAY) 3:00 PM

**Kirkland Cemetery Tour
Alan Stein**

This is becoming an Eastside favorite! The tour will be held rain or shine! A tour is being conducted at 2:00 for schools and scouts!

KHS Board and Committee Chairs will meet on April 24th at 6:00 p.m. at the Congregational Church.

MAY 29, 7:00 PM

Kirkland Congregational Church

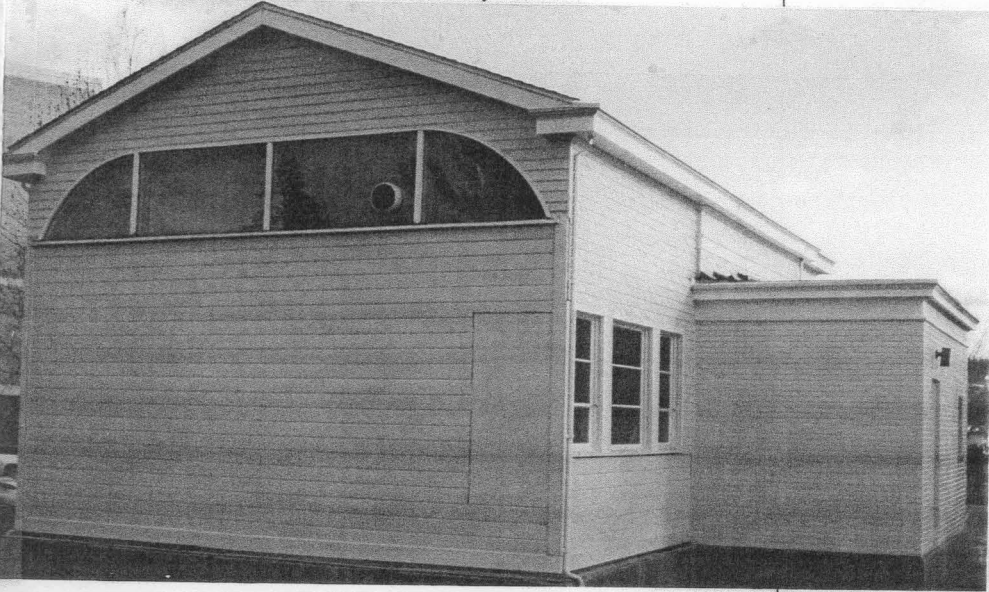
QUILTS - OLD AND NEW!

Come share your quilts: the stories and history behind them!

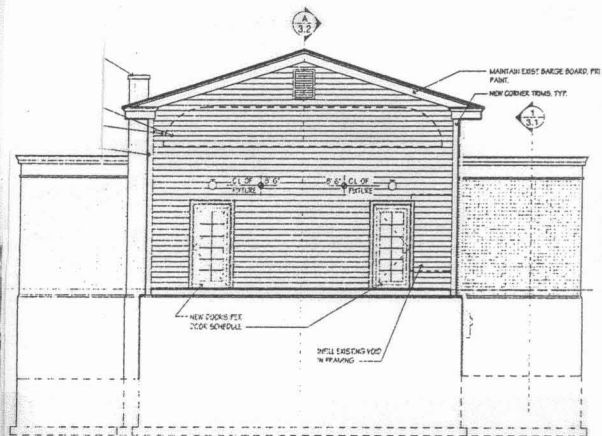
KHS BOARD ELECTION NOMINEES

Vice President:	Alan Stein
Treasurer:	Nancy Stephens
At-Large:	David Cantrill

The above members have been nominated to serve on the KHS Board of Directors. Nominations from the floor can be made at the election at the May meeting.



Northwest Corner of Building



Proposed North Elevation



STARTING THE JOURNEY TO A NEW SITE !! APRIL 1999

**A lot has happened and we're now beginning the major effort to complete the interior!
Buy a Wilkeson Stone Paver! Volunteer! Make a Contribution!
Our Goal is to complete the work by October, 2002!**

Blackberry Preserves is produced by the Kirkland Heritage Society, 1032 4th Street, Kirkland, WA 98033, for KHS members and those interested in Kirkland's past. To contribute articles or for more information on KHS, please call Bob Burke, Editor, 425-828-4095.



Kirkland Heritage Society

Kirkland Heritage Society
1032 4th Street
Kirkland, WA 98033



ALWAYS
USE ZIP
CODE